

Streptococcus pneumoniae* Family 1, Clade 2 Pneumococcal Surface Protein A (PspA UAB055) with C-Terminal Histidine Tag, Recombinant from *Escherichia coli

Catalog No. NR-51403

This reagent is the tangible property of the U.S. Government.

Product Description:

NR-51403 is a recombinant pneumococcal surface protein A (PspA UAB055) from *Streptococcus pneumoniae* (*S. pneumoniae*) Family 1, Clade 2. NR-51403 lot 70049115 was produced in *Escherichia coli* BL21(DE3) pLysS and purified by affinity chromatography.

Lot: 70049115

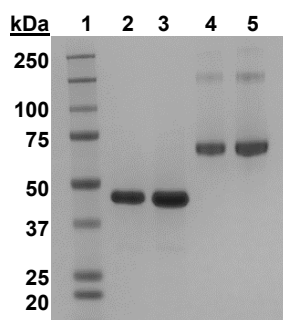
Manufacturing Date: 28JAN2022

TEST	SPECIFICATIONS	RESULTS
Appearance	Report results	Clear and colorless
Molecular Weight Determination by MALDI-MS	Report results	34.692 kDa
SDS-PAGE Analysis¹	Protein band of interest represents > 90% of total staining intensity	Dominant band of ~ 46 kDa accounting for > 95% of total staining intensity (Figure 1)
Protein Concentration by Bicinchoninic Acid Assay	Report results	1.08 mg per mL
Final Product Amount per vial Volume per vial	Report results Report results	270 µg 250 µL
Functional Activity Western Blot Analysis using Anti-His Mab ²	Report results	Reactive (Figure 2)
Endotoxin Content (Limulus Amoebocyte Lysate)	Report results	5.79 EU/mg
Filtration	0.2 µm sterile filtered	0.2 µm sterile filtered

¹ Fusion protein runs high on SDS-PAGE (~46 kDa)

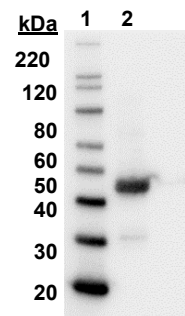
²Using a 1:1000 dilution of mouse monoclonal anti-histidine tag (Takara, Cat. No. 631212) as primary antibody and a 1:1000 dilution of HRP-conjugated goat anti-mouse IgG (R&D Systems, Cat. No. HAF007) as secondary antibody

Figure 1: SDS-PAGE Analysis



Lane 1: Precision Plus Protein™ Standard
 Lane 2: NR-51403 (1 µg)
 Lane 3: NR-51403 (2.0 µg)
 Lane 4: Positive control, BSA (1 µg)
 Lane 5: Positive control, BSA (2.0 µg)

Figure 2: Western Blot Analysis



Lane 1: MagicMark™ XP Protein Standard
 Lane 2: NR-51403 (1.0 µg)
 Lane 3: BSA (1.0 µg)

/Sonia Bjorum Brower/

Sonia Bjorum Brower

16 NOV 2022

Technical Manager or designee, ATCC Federal Solutions

ATCC[®], on behalf of BEI Resources, hereby represents and warrants that the material provided under this certificate has been subjected by the contributor to the tests and procedures specified and that the results described, along with any other data provided in this certificate, are true and accurate to the best of ATCC[®]'s knowledge.

ATCC[®] is a trademark of the American Type Culture Collection.

You are authorized to use this product for research use only. It is not intended for human use.

