

Staphylococcus aureus, Strain HT 20020351

Catalog No. NR-46045

Product Description:

Staphylococcus aureus (*S. aureus*), strain HT 20020351 was isolated in 2002 from a male inpatient in France. *S. aureus*, strain HT 20020351 was deposited to BEI Resources as part of the NARSA collection. NR-46045 was produced by inoculation of the deposited material into Tryptic Soy broth and grown for 1 day at 37°C in an aerobic atmosphere. Broth inoculum was added to Tryptic Soy agar with 5% defibrinated sheep blood kolles, which were grown for 1 day at 37°C in an aerobic atmosphere to produce this lot. Quality control testing was completed under propagation conditions unless otherwise noted.

Lot: 70039297

Manufacturing Date: 18SEP2020

BEI Resources is committed to ensuring digital accessibility for people with disabilities. This Certificate of Analysis contains complex tables and may not be fully accessible. Please let us know if you encounter accessibility barriers and a fully accessible document will be provided: E-mail: Contact@BEIResources.org. We try to respond to feedback within 24 hours.

TEST	SPECIFICATIONS	RESULTS
Phenotypic Analysis Cellular morphology Colony morphology Motility (wet mount) Hemolysis Biochemical characterization Catalase Coagulase VITEK® MS (MALDI-TOF)	Gram-positive cocci Report results Report results Report results Positive Report results <i>S. aureus</i>	Gram-positive cocci Circular, convex, entire, smooth and cream (Figure 1) Non-motile β-hemolytic Positive Positive <i>S. aureus</i> (99.9%)
Antibiotic Susceptibility Profile^{1,2} Cefinase™ Paper Disc Beta-lactamase Etest® antibiotic test strips 1 day at 35°C in an aerobic atmosphere on Mueller Hinton agar Chloramphenicol Teicoplanin Quinupristin/dalfopristin VITEK® AST-GP78 card Cefoxitin screen Benzylpenicillin Oxacillin Ceftaroline Gentamicin Ciprofloxacin Levofloxacin Moxifloxacin Clindamycin (inducible resistance) Erythromycin Clindamycin Linezolid Daptomycin Vancomycin Minocycline Tetracycline	Report results Report results Sensitive Sensitive Report results Report results Sensitive Sensitive Report results Report results Report results Intermediate Sensitive Sensitive Report results Sensitive Report results Report results	Positive Sensitive (4 µg/mL) Sensitive (1.5 µg/mL) Sensitive (0.5 µg/mL) Negative Resistant (≥ 0.5 µg/mL) Sensitive (≤ 0.5 µg/mL) Sensitive (0.25 µg/mL) Sensitive (≤ 0.5 µg/mL) Sensitive (0.25 µg/mL) Sensitive (≤ 0.25 µg/mL) Negative Sensitive (≤ 0.25 µg/mL) ³ Sensitive (0.25 µg/mL) Sensitive (2 µg/mL) Sensitive (≤ 0.5 µg/mL) Sensitive (1 µg/mL) Sensitive (≤ 0.5 µg/mL) Sensitive (≤ 1 µg/mL)

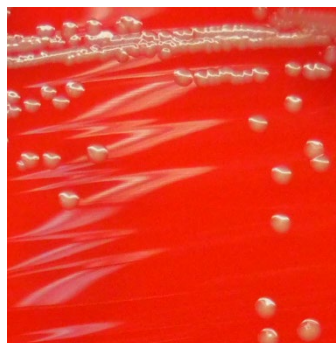
TEST	SPECIFICATIONS	RESULTS
Tigecycline Nitrofurantoin Rifampicin Trimethoprim/sulfamethoxazole	Report results Report results Report results Sensitive	Sensitive ($\leq 0.12 \mu\text{g/mL}$) Sensitive ($32 \mu\text{g/mL}$) Sensitive ($\leq 0.5 \mu\text{g/mL}$) Sensitive ($\leq 10 \mu\text{g/mL}$)
Genotypic Analysis Sequencing of 16S ribosomal RNA gene (~ 1430 base pairs)	$\geq 99\%$ sequence identity to <i>S. aureus</i> type strain (GenBank: L37597)	100% sequence identity to <i>S. aureus</i> type strain (GenBank: L37597)
Purity (post-freeze) 7 days at 37°C in an aerobic atmosphere with 5% CO ₂ on Tryptic Soy agar with 5% defibrinated sheep blood	Growth consistent with expected colony morphology	Growth consistent with expected colony morphology
Viability (post-freeze)	Growth	Growth

¹Minimum Inhibitory Concentration (MIC); MIC Interpretation Guideline: CLSI M100-S28 (2018)

²MIC Interpretation Guideline: EUCAST Version 8.0 (2018)

³*S. aureus*, strain HT 20020351 was deposited as intermediate to erythromycin, but showed a MIC of $\leq 0.25 \mu\text{g per mL}$ (interpreted as sensitive) for erythromycin during QC testing. Testing was performed in duplicate.

Figure 1: Colony Morphology



/Heather Couch/
Heather Couch

07 SEP 2021

Program Manager or designee, ATCC Federal Solutions

ATCC®, on behalf of BEI Resources, hereby represents and warrants that the material provided under this certificate has been subjected by ATCC® to the tests and procedures specified and that the results described, along with any other data provided in this certificate, are true and accurate to the best of ATCC®'s knowledge.

ATCC® is a trademark of the American Type Culture Collection.

You are authorized to use this product for research use only. It is not intended for human use.

