

Monoclonal Anti-SARS-Related Coronavirus 2 Spike Glycoprotein Receptor Binding Domain (RBD), Chimeric Potent Neutralizing Antibody (produced *in vitro*)

Catalog No. NR-55410

ACROBiosystems Catalog No. SPD-M128

Product Description:

Antibody Class: IgG1k

Chimeric monoclonal antibody prepared against the severe acute respiratory syndrome-related coronavirus 2 (SARS-CoV-2) spike (S) glycoprotein receptor binding domain (RBD) was produced using recombinant antibody technology. The variable region was obtained from immunized mice, which was combined with constant domains of the human IgG1 molecule. NR-55410 lot M128-2114F1-V6 was lyophilized from 111 µL bulk antibody in phosphate-buffered saline, pH 7.4 with 10% trehalose.

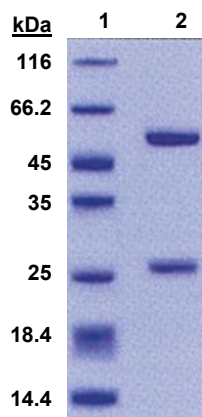
Lot: M128-2114F1-V6

Receipt Date: 13MAY2021

| TEST | SPECIFICATIONS | RESULTS |
|--|--|--|
| Appearance | White powder | White powder |
| SDS-PAGE Analysis | Protein bands of interest represents > 95% of total staining intensity | Dominant bands of ~ 50 and 30 kDa represent > 95% of total staining intensity (Figure 1) |
| Final Product Amount per vial | Report results | 100 µg |
| Functional Activity by ELISA | Reactive | Reactive ¹ |
| Filtration | 0.2 µm sterile-filtered | 0.2 µm sterile-filtered |
| Endotoxin Content (Limulus Amoebocyte Lysate Assay) | < 1.0 EU per µg | < 1.0 EU per µg |

¹Using 1 µg per mL of immobilized SARS-CoV-2 S glycoprotein RBD (ACROBiosystems Cat. No. SPD-C52H1) with a linear range of 0.2 to 1.5 ng per mL

Figure 1: SDS-PAGE Analysis



Lane 1: Protein Standard
Lane 2: NR-55410

/Heather Couch/

Heather Couch

19 JUL 2021

Program Manager or designee, ATCC Federal Solutions

ATCC®, on behalf of BEI Resources, hereby represents and warrants that the material provided under this certificate has been subjected by the contributor to the tests and procedures specified and that the results described, along with any other data provided in this certificate, are true and accurate to the best of ATCC®'s knowledge.

ATCC® is a trademark of the American Type Culture Collection.

You are authorized to use this product for research use only. It is not intended for human use.

