

N2 Neuraminidase (NA) Protein from Influenza A Virus, A/Hong Kong/2286/2017 (H3N2), Recombinant from Baculovirus

Catalog No. NR-52032

This reagent is the tangible property of the U.S. Government.

Product Description:

A recombinant form of the N2 neuraminidase (NA) protein from influenza A virus, A/Hong Kong/2286/2017 (H3N2) was produced in Sf9 insect cells using a baculovirus expression vector system. The recombinant NA protein containing the N2 ectodomain and a hexa-histidine tag was purified by ion exchange and affinity chromatography. This item was manufactured and subjected to quality control testing by St. Jude Children’s Research Hospital (SJCRH), Memphis, Tennessee, USA.

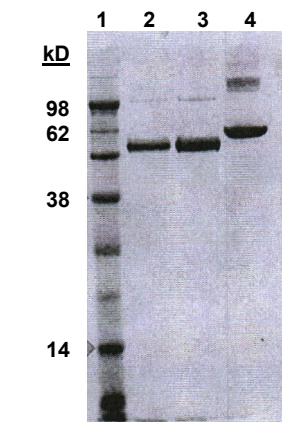
Lot: 70032793

Manufacturing Date: 07NOV2019

TEST	SPECIFICATIONS	RESULTS
Appearance	Report results	Opalescent
SDS-PAGE Analysis	Protein band of interest represents > 90% of total staining intensity	Dominant band of ~ 55 kDa accounting for > 90% of total staining intensity (Figure 1)
Concentration by Bicinchoninic Acid Assay Bovine Serum Albumin (standard)	Report results	1.8 mg per mL
Final Product Amount per vial Volume per vial	Report results Report results	525 µg 0.3 mL
Functional Activity Neuraminidase activity in fluorescent enzymatic assay ¹	Report results	Positive (1:1024)
Filtration	0.2 µm sterile-filtered	0.2 µm sterile-filtered

¹Using serial dilutions of NR-52032 and 2’-(4-methylumbelliferyl)-α-D-N-acetylneuraminic acid (4-MUNANA), as described in Wetherall, N. T., et al. “Evaluation of Neuraminidase Enzyme Assays Using Different Substrates to Measure Susceptibility of Influenza Virus Clinical Isolates to Neuraminidase Inhibitors: Report of the Neuraminidase Inhibitor Susceptibility Network.” *J. Clin. Microbiol.* 41 (2003): 742-750. PubMed: 12574276.

Figure 1: SDS-PAGE Analysis of Recombinant H2 HA Protein



Lane 1: Molecular weight markers
 Lane 2: NR-52032 (1 µg)
 Lane 3: NR-52032 (2.5 µg)
 Lane 4: BSA

/Heather Couch/

Heather Couch

28 AUG 2020

Program Manager or designee, ATCC Federal Solutions

ATCC[®], on behalf of BEI Resources, hereby represents and warrants that the material provided under this certificate has been subjected by the contributor to the tests and procedures specified and that the results described, along with any other data provided in this certificate, are true and accurate to the best of ATCC[®]'s knowledge.

ATCC[®] is a trademark of the American Type Culture Collection.

You are authorized to use this product for research use only. It is not intended for human use.

