

Genomic DNA from *Toxoplasma gondii*, Strain GAB2-2007-GAL-DOM2

Catalog No. NR-51623

Product Description:

Genomic DNA was extracted from *Toxoplasma gondii* (*T. gondii*), strain GAB2-2007-GAL-DOM2 (also referred to as strain TgA105004), which was isolated in 2007 from a chicken in Makokou, Gabon, Africa. NR-51623 was extracted from BEI Resources NR-31079 lot 70025297 using proprietary technology. NR-51623 lot 70030017 is provided in 10 mM Tris-HCl, 1 mM EDTA, pH 7.5.

Lot: 70030017

Manufacturing Date: 07MAY2019

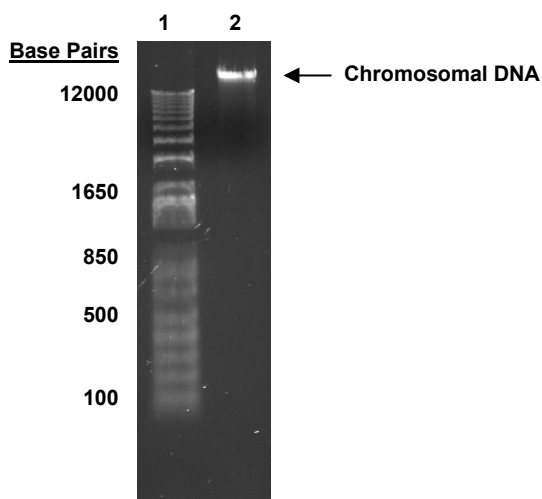
TEST	SPECIFICATIONS	RESULTS
Agarose Gel Electrophoresis	High molecular weight chromosomal DNA	High molecular weight chromosomal DNA (Figure 1)
Content by PicoGreen® Measurement	0.2 to 3.5 µg in 20 to 200 µL per vial	1.9 µg in 153 µL per vial (12 µg/mL) ¹
Amount per Vial	0.2 to 3.5 µg	1.9 µg ¹
Genotypic Analysis Sequencing of uracil phosphoribosyltransferase (UPRT) intron 1 (530 base pairs)	≥ 99% sequence identity to <i>T. gondii</i> , strain GAB2-2007-GAL-DOM2 (GenBank: AHZU02000452.1)	100% sequence identity to <i>T. gondii</i> , strain GAB2-2007-GAL-DOM2 (GenBank: AHZU02000452.1)
PCR Assay of Extracted DNA UPRT intron 1 ²	~ 560 base pair amplicon	~ 560 base pair amplicon
OD₂₆₀/OD₂₈₀ Ratio	1.7 to 2.1	1.9
Protozoan Inactivation 10% of total yield inoculated in medium ³	No viable organisms detected	No viable organisms detected

¹The post-vial calculation determined that there are less micrograms of material in the vial than was expected based on the pre-vialing calculation, but does not negatively affect the final product.

²Primer sequences and conditions for PCR are available upon request.

³Incubated for 14 days at 37°C in an aerobic atmosphere with 5% CO₂ in DMEM supplemented with 10% heat-inactivated fetal bovine serum.

Figure 1: Agarose Gel Electrophoresis



Lane 1: Invitrogen™ TrackIt™ 1 Kb Plus DNA Ladder
Lane 2: ~ 200 ng of NR-51623

/Heather Couch/

Heather Couch

06 AUG 2020

Program Manager or designee, ATCC Federal Solutions

ATCC[®], on behalf of BEI Resources, hereby represents and warrants that the material provided under this certificate has been subjected to the tests and procedures specified and that the results described, along with any other data provided in this certificate, are true and accurate to the best of ATCC[®]'s knowledge.

ATCC[®] is a trademark of the American Type Culture Collection.

You are authorized to use this product for research use only. It is not intended for human use.

