

**Monoclonal Anti-*Leishmania amazonensis*, Strain WR303 (MHOM/BR/68/H6), Clone M-3 (produced *in vitro*)**

**Catalog No. NR-50158**

**Product Description:** Antibody Class: IgG1k

Mouse monoclonal antibody prepared against *Leishmania amazonensis* (*L. amazonensis*), strain WR303 (MHOM/BR/68/H6), clone M-3 was purified from the hybridoma supernatant by protein G affinity chromatography.

**Lot<sup>1</sup>: 70016412**

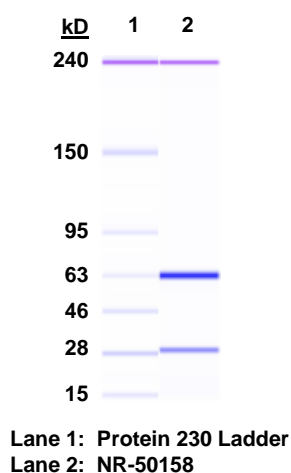
**Manufacturing Date: 30AUG2018**

TEST	SPECIFICATIONS	RESULTS
Antibody Class Determination	Report results	IgG1k
Agilent® Protein 230 Analysis Average Purity	Correct molecular weight for heavy and light chains Report results	Correct molecular weight for heavy and light chains (Figure 1) 99% pure
Concentration by Spectrophotometer at OD <sub>280</sub>	≥ 1.0 mg per mL	1.4 mg per mL
Functional Activity by Immunofluorescence Assay <sup>2</sup> <i>L. amazonensis</i> promastigotes with NR-50158  <i>L. amazonensis</i> promastigotes with fluorescein isothiocyanate (FITC)-conjugated goat anti-mouse IgG	Reactive  Nonreactive	Reactive; staining of <i>L. amazonensis</i> promastigotes (Figure 2) Nonreactive; no specific staining of parasites
Sterility	0.22 µm filter-sterilized	0.22 µm filter-sterilized

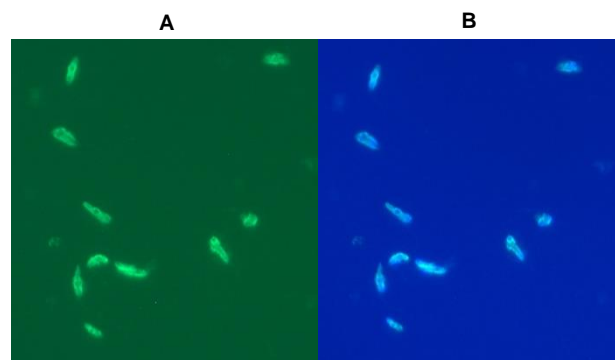
<sup>1</sup>Mouse monoclonal antibody was purified using protein G affinity chromatography from supernatants obtained from mouse hybridoma clone M-3 adapted to serum-free media.

<sup>2</sup>Specific labeling of *L. amazonensis* promastigotes was observed after culturing of *L. amazonensis*, strain LV78 (+bla) (BEI Resources NR-49247 lot 63769236) for 2 days.

**Figure 1: Agilent® Protein 230 Analysis**



**Figure 2: Immunofluorescence Assay of *L. amazonensis* Promastigotes**



**2A:** *L. amazonensis* with NR-50158 used at a dilution of 1:500, followed by FITC-conjugated goat anti-mouse IgG (Invitrogen® A16073) as secondary antibody (1:2000).

**2B:** Image from Figure 2A with overlaid 4',6-diamidino-2-phenylindole (DAPI)-stained image.

/Heather Couch/  
Heather Couch

05 APR 2019

Program Manager or designee, ATCC Federal Solutions

ATCC®, on behalf of BEI Resources, hereby represents and warrants that the material provided under this certificate has been subjected to the tests and procedures specified and that the results described, along with any other data provided in this certificate, are true and accurate to the best of ATCC®'s knowledge.

ATCC® is a trademark of the American Type Culture Collection.

You are authorized to use this product for research use only. It is not intended for human use.

