

Genomic DNA from *Candida albicans*, Strain 23Q

Catalog No. NR-50389

Product Description: Genomic DNA was extracted from a preparation of *Candida albicans* (*C. albicans*), strain 23Q. *C. albicans*, strain 23Q is a human isolate collected in China.

Lot^{1,2}: 70004174

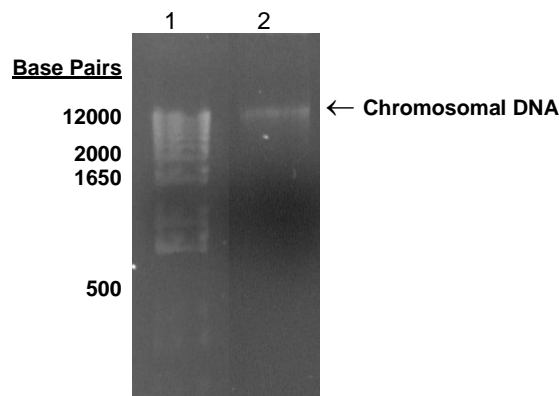
Manufacturing Date: 04APR2017

TEST	SPECIFICATIONS	RESULTS
Genotypic Analysis Partial 18S ribosomal RNA (rRNA) gene, internal transcribed spacer (ITS) 1, 5.8S rRNA gene, ITS 2, partial 28S rRNA (~ 530 base pairs) D1D2 region of the 28S rRNA gene (~ 590 base pairs)	≥ 99% sequence identity to <i>C. albicans</i> type strain (GenBank: HQ876043.1) ≥ 99% sequence identity to <i>C. albicans</i> type strain (GenBank: HQ876051.1)	99.8% sequence identity to <i>C. albicans</i> type strain (GenBank: HQ876043.1) 100% sequence identity to <i>C. albicans</i> type strain (GenBank: HQ876051.1)
Agarose Gel Electrophoresis	High molecular weight chromosomal DNA	High molecular weight chromosomal DNA (Figure 1)
Concentration by PicoGreen® Measurement	≥ 5 µg per vial	7.5 µg in 100 µL per vial
Functional Activity by PCR Amplification Ribosomal RNA and ITS region	~ 1200 base pair amplicon	~ 1200 base pair amplicon
OD₂₆₀/OD₂₈₀ Ratio	1.7 to 2.1	1.9

¹The fungal preparation used for extraction of genomic DNA was produced from a culture of NR-29341 lot 61662598. Genomic DNA was extracted using proprietary technology.

²NR-50389 lot 70004174, was vialled in Tris-HCl EDTA buffer (10 mM Tris-HCl, 1 mM EDTA, pH ~ 8.0).

Figure 1: Agarose Gel Electrophoresis



Lane 1: Invitrogen™ TrackIt 1 Kb Plus DNA Ladder™
 Lane 2: ~ 200 ng of NR-50389

/Heather Couch/
Heather Couch

17 DEC 2018

Program Manager or designee, ATCC Federal Solutions

ATCC®, on behalf of BEI Resources, hereby represents and warrants that the material provided under this certificate has been subjected to the tests and procedures specified and that the results described, along with any other data provided in this certificate, are true and accurate to the best of ATCC®'s knowledge.

ATCC® is a trademark of the American Type Culture Collection.

You are authorized to use this product for research use only. It is not intended for human use.

