

***Aspergillus fumigatus*, Strain OS-0121**

Catalog No. NR-45107

Product Description: *Aspergillus fumigatus* (*A. fumigatus*), strain OS-0121, was isolated in 2010 from a 46-year-old male patient with invasive aspergillosis in Belgium. *A. fumigatus*, strain OS-0121 was deposited as an azole resistant strain.

Lot¹: 0002027

Manufacturing Date: 28SEP2016

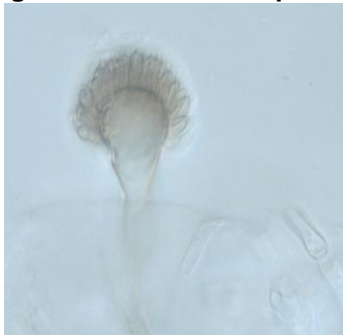
TEST	SPECIFICATIONS	RESULTS
Phenotypic Analysis Cellular morphology ² Surface, reverse, hypae Conidial morphology ² Conidia, conidial heads	Report results Report results	Green, flat, powdery; pale yellow Ellipsoid, smooth-walled; columnar with phialades on upper half only (Figure 1)
Genotypic Analysis Sequencing of internal transcribed spacer (ITS) 1, 5.8S ribosomal RNA (rRNA) gene, and ITS 2 (~ 650 base pairs) Sequencing of 28S rRNA gene (partial) (~ 540 base pairs)	≥ 99% sequence identity to <i>A. fumigatus</i> , type strain (GenBank: NR_121481.1) ≥ 99% sequence identity to <i>A. fumigatus</i> , type strain (GenBank: AY660917.1)	100% sequence identity to <i>A. fumigatus</i> , type strain (GenBank: NR_121481.1) 100% sequence identity to <i>A. fumigatus</i> , type strain (GenBank: AY660917.1)
Purity³ Modified Sabouraud Dextrose agar at 25°C Nutrient broth with 0.1% Yeast Extract at 25°C Nutrient broth with 0.1% Yeast Extract at 37°C	No bacterial growth No bacterial growth No bacterial growth	No bacterial growth No bacterial growth No bacterial growth
Viability (post-freeze)²	Growth	Growth

¹NR-45107 was produced by growth of the deposited material on Modified Sabouraud Dextrose agar in an aerobic atmosphere at 25°C for 9 days.

²31 days at 25°C in an aerobic atmosphere on Potato Dextrose agar

³Clarity of broth was determined by visual inspection after 23 days in an aerobic atmosphere.

Figure 1: Conidial Morphology



/Heather Couch/
 Heather Couch

17 DEC 2018

Program Manager or designee, ATCC Federal Solutions

ATCC®, on behalf of BEI Resources, hereby represents and warrants that the material provided under this certificate has been subjected to the tests and procedures specified and that the results described, along with any other data provided in this certificate, are true and accurate to the best of ATCC®'s knowledge.

ATCC® is a trademark of the American Type Culture Collection.

You are authorized to use this product for research use only. It is not intended for human use.

