

**Monoclonal Anti-*Leishmania panamensis*, Strain WR120 (MHOM/PA/74/WR120), Clone B-11 (produced *in vitro*)**

**Catalog No. NR-50152**

**Product Description:** Antibody Class: IgG1κ

Mouse monoclonal antibody prepared against *Leishmania panamensis* (*L. panamensis*), strain WR120 (MHOM/PA/74/WR120), clone B-11 was purified from the hybridoma supernatant by protein G affinity chromatography.

**Lot<sup>1</sup>: 70007577**

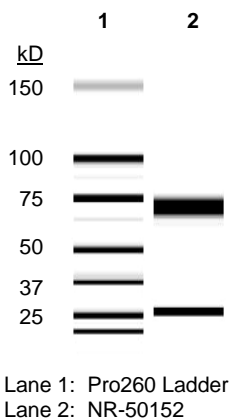
**Manufacturing Date: 22SEP2017**

TEST	SPECIFICATIONS	RESULTS
<b>Antibody Class Determination</b>	Report results	IgG1κ
<b>Experion Pro260 Analysis</b> Average Purity	Correct molecular weight (MW) for heavy and light chains Report results	Correct MW for heavy and light chains (Figure 1) 98.4% pure
<b>Concentration by Spectrophotometer at OD<sub>280</sub></b>	≥ 1.0 mg per mL	1.3 mg per mL
<b>Functional Activity by Immunofluorescence Assay<sup>2</sup></b> <i>L. panamensis</i> promastigotes with NR-50152	Reactive	Reactive; staining of <i>Leishmania</i> promastigotes (Figure 2)
<i>L. panamensis</i> promastigotes with FITC-conjugated goat anti-mouse IgG	Nonreactive	Nonreactive; no specific staining of <i>Leishmania</i> promastigotes
<b>Sterility</b>	0.22 μm filter-sterilized	0.22 μm filter-sterilized

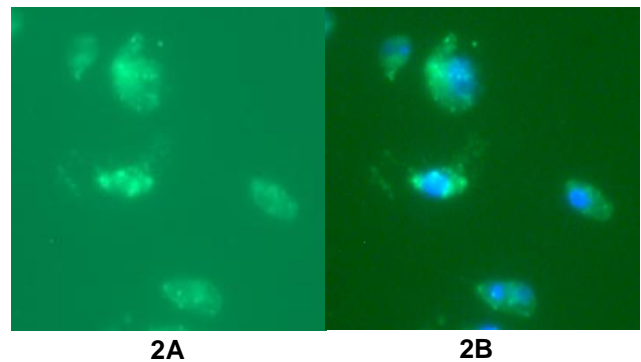
<sup>1</sup>Mouse monoclonal antibody was purified using protein G affinity chromatography from supernatants obtained from mouse hybridoma clone B-11 adapted to serum-free media.

<sup>2</sup>Specific labeling of *L. panamensis* promastigotes with NR-50152 and FITC was observed after culturing of *L. panamensis*, strain PSC-1 (MHOM/PA/94/PSC-1) (BEI Resources NR-50162 lot 64233619) for 48 hours (Figure 2A). NR-50152 was used at a dilution of 1:500, followed by FITC-conjugated goat anti-mouse IgG (Invitrogen® A16073) as secondary antibody (1:2000). The overlaid 4',6-diamidino-2-phenylindole (DAPI)-stained image is shown in Figure 2B.

**Figure 1: Experion Pro260 Analysis**



**Figure 2: Immunofluorescence Assay of *Leishmania* Promastigotes**



/Heather Couch/

Heather Couch

14 SEP 2018

Program Manager or designee, ATCC Federal Solutions

ATCC<sup>®</sup>, on behalf of BEI Resources, hereby represents and warrants that the material provided under this certificate has been subjected to the tests and procedures specified and that the results described, along with any other data provided in this certificate, are true and accurate to the best of ATCC<sup>®</sup>'s knowledge.

ATCC<sup>®</sup> is a trademark of the American Type Culture Collection.

You are authorized to use this product for research use only. It is not intended for human use.

