

Genomic DNA from *Listeria monocytogenes*, Strain Li 20

Catalog No. NR-4210

Product Description: Genomic DNA was obtained from a preparation of *Listeria monocytogenes* (*L. monocytogenes*), strain Li 20. Li 20 is a serotype 1/2a strain, one of the serotypes frequently associated with human listeriosis. Li 20 was originally isolated from poultry in England.

Lot¹: 58263158

Manufacturing Date: 24JUL2008

| TEST | SPECIFICATIONS | RESULTS |
|---|---|--|
| Sequencing of 16S Ribosomal RNA Gene (~ 1460 bp) | Consistent with <i>L. monocytogenes</i> | Consistent with <i>L. monocytogenes</i> ² |
| Agarose Gel Electrophoresis | High molecular weight chromosomal DNA | High molecular weight chromosomal DNA (Figure 1) |
| Concentration by PicoGreen[®] Measurement | 4 to 6 µg in 25 to 100 µL per vial | 5.8 µg in 62 µL per vial (93.6 µg/mL) |
| Functional Activity by PCR Amplification 16S ribosomal RNA gene | ~ 1500 bp amplicon | ~ 1500 bp amplicon |
| OD₂₆₀/OD₂₈₀ Ratio | 1.7 to 1.9 | 1.8 |
| Bacterial Inactivation 10% of total yield plated on Tryptic Soy Agar with 5% sheep blood ^{3,4} | No viable bacteria detected | No viable bacteria detected |

¹NR-4210 was prepared by Brain Heart Infusion broth (BD 237500) culture of NR-106 (Lot: 3655711). After incubation for 24 hours at 37°C in an aerobic atmosphere, genomic DNA was extracted using proprietary technology.

²Also consistent with other *Listeria* species.

³7 days at 37°C in an aerobic atmosphere.

⁴An extraction procedure was used that has been shown to consistently inactivate 100% of Gram-negative bacteria.

Date: 07 OCT 2008

Signature: Signature on File

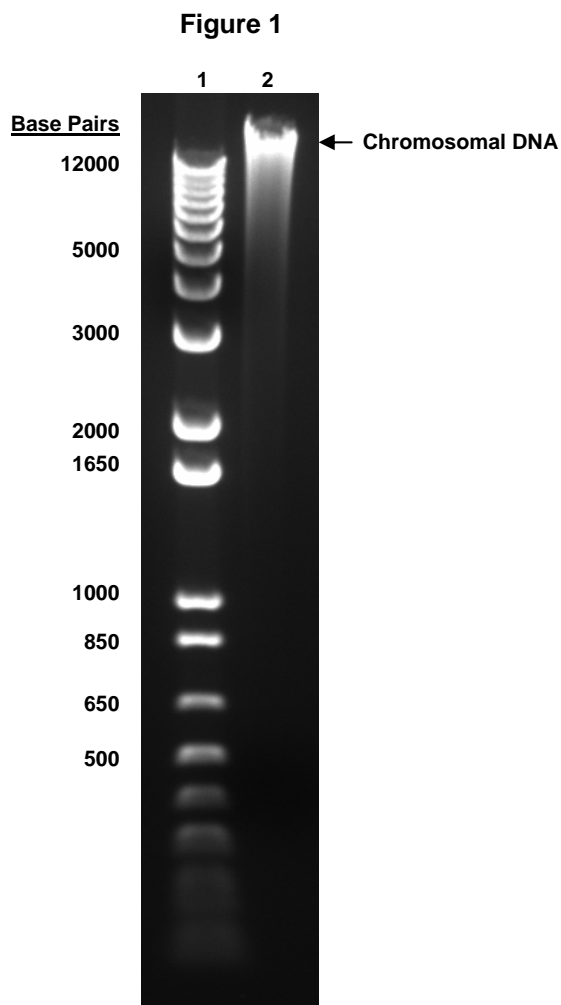
Title: Technical Manager, BEI Authentication or designee

ATCC[®], on behalf of BEI Resources, hereby represents and warrants that the material provided under this certificate has been subjected to the tests and procedures specified and that the results described, along with any other data provided in this certificate, are true and accurate to the best of ATCC[®]'s knowledge.

ATCC[®] is a trademark of the American Type Culture Collection.

You are authorized to use this product for research use only. It is not intended for human use.





Lane 1: Invitrogen™ TrackIt™ 1 Kb Plus DNA Ladder
Lane 2: 200 ng of NR-4210