

**Monoclonal Anti-*Trypanosoma cruzi*, Strain Y, Amastigote Surface Antigen Ssp-4, Clone 2C2 (produced *in vitro*)**

**Catalog No. NR-50892**

**Product Description:** Antibody Class: IgG2a $\lambda$

Mouse monoclonal antibody prepared against the amastigote-specific surface antigen Ssp-4 of *Trypanosoma cruzi* (*T. cruzi*), strain Y, clone 2C2 was purified from the hybridoma supernatant by protein G affinity chromatography.

**Lot<sup>1</sup>: 70010170**

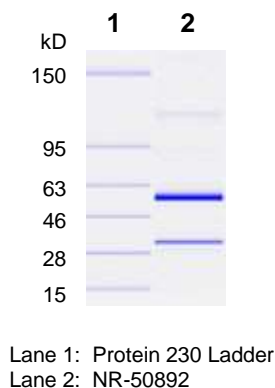
**Manufacturing Date: 23MAR2018**

TEST	SPECIFICATIONS	RESULTS
<b>Antibody Class Determination</b>	Report results	IgG2a $\lambda$
<b>Agilent Protein 230 Analysis</b> Average Purity	Correct molecular weight (MW) for heavy and light chains Report results	Correct molecular weight (MW) for heavy and light chains (Figure 1) 91.2% pure
<b>Concentration by Spectrophotometer at OD<sub>280</sub></b>	≥ 1.0 mg per mL	1.6 mg per mL
<b>Functional Activity by Immunofluorescence Assay<sup>2</sup></b> <i>T. cruzi</i> -infected <i>Cercopithecus aethiops</i> kidney epithelial cells with NR-50892 <i>T. cruzi</i> -infected <i>Cercopithecus aethiops</i> kidney epithelial cells with fluorescein isothiocyanate (FITC)-conjugated goat anti-mouse IgG	Reactive  Nonreactive	Reactive; immunostaining of amastigotes (Figure 2) Nonreactive; no specific staining of parasites
<b>Sterility</b>	0.22 $\mu$ m filter-sterilized	0.22 $\mu$ m filter-sterilized

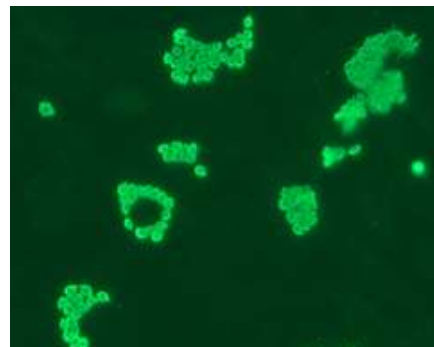
<sup>1</sup>Mouse monoclonal antibody was purified using protein G affinity chromatography from supernatants obtained from mouse hybridoma clone 2C2 adapted to serum-free media.

<sup>2</sup>Specific labeling of *T. cruzi* cells with NR-50892 and FITC was observed after infection of *Cercopithecus aethiops* kidney epithelial cells (ATCC<sup>®</sup> CCL-26<sup>™</sup>) with *T. cruzi* (ATCC<sup>®</sup> PRA-376<sup>™</sup>). NR-50892 was used at a dilution of 1:500, followed by FITC-conjugated goat anti-mouse IgG (Invitrogen<sup>®</sup> A11001) as secondary antibody (1:2000).

**Figure 1: Agilent<sup>®</sup> Protein 230 Analysis**



**Figure 2: Immunofluorescence Assay of *T. cruzi*-Infected Kidney Epithelial Cells**



/Heather Couch/

Heather Couch

06 AUG 2018

Program Manager or designee, ATCC Federal Solutions

ATCC®, on behalf of BEI Resources, hereby represents and warrants that the material provided under this certificate has been subjected to the tests and procedures specified and that the results described, along with any other data provided in this certificate, are true and accurate to the best of ATCC®'s knowledge.

ATCC® is a trademark of the American Type Culture Collection.

You are authorized to use this product for research use only. It is not intended for human use.

