

**Genomic DNA from *Babesia duncani*, Strain WA1**

**Catalog No. NR-50773**

**Product Description:** Genomic DNA was extracted from *Babesia duncani* (*B. duncani*), strain WA1, which was isolated in 1992 from human blood from the first reported case of babesiosis acquired in Washington State.

**Lot<sup>1</sup>: 70011792**

**Manufacturing Date: 08DEC2017**

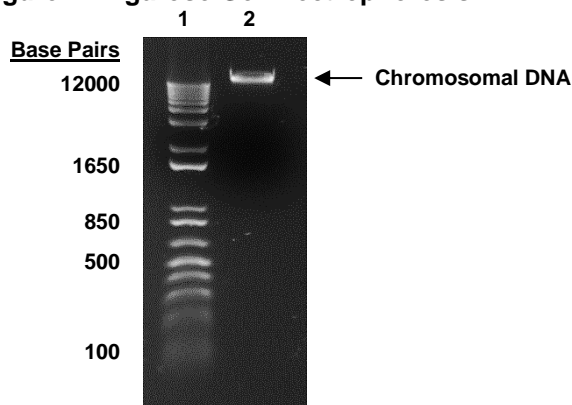
TEST	SPECIFICATIONS	RESULTS
<b>Agarose Gel Electrophoresis</b>	High molecular weight chromosomal DNA	High molecular weight chromosomal DNA (Figure 1)
<b>Content by PicoGreen<sup>®</sup> Measurement</b>	0.2 to 3.5 µg in 20 to 200 µL per vial	2.7 µg in 64 µL per vial (42 µg/mL)
<b>Amount per Vial</b>	0.2 to 3.5 µg	2.7 µg
<b>Genotypic Analysis</b> Sequencing of internal transcribed spacer (ITS) 1, 5.8S ribosomal RNA gene, ITS 2 (~ 680 base pairs)	Consistent with <i>B. duncani</i>	Consistent with <i>B. duncani</i>
<b>PCR Assay of Extracted DNA<sup>2</sup></b> ITS 1, 5.8S ribosomal RNA gene, ITS 2	~ 930 base pair amplicon	~ 930 base pair amplicon
<b>OD<sub>260</sub>/OD<sub>280</sub> Ratio</b>	1.7 to 2.1	1.9
<b>Protozoan Inactivation</b> 10% of total yield inoculated in medium <sup>3</sup>	No viable organisms detected	No viable organisms detected

<sup>1</sup>NR-50773 was extracted from BEI Resources NR-12311 lot 58734169 using proprietary technology. NR-50773 lot 70011792 is provided in 10 mM Tris-HCl, 1 mM EDTA, pH 7.5.

<sup>2</sup>Primer sequences and conditions for PCR are available upon request.

<sup>3</sup>Incubated for 14 days at 37°C in a humidified atmosphere of 93% N<sub>2</sub>: 5% CO<sub>2</sub>: 2% O<sub>2</sub> in *Babesia* Growth Medium [HL-1™ Chemically Defined, Serum-Free Medium (Lonza 77201) adjusted to contain 20% human serum type A positive, 1% HB 101<sup>®</sup> supplement (Irvine Scientific<sup>®</sup> T151), 2 mM L-glutamine, 0.2 mM hypoxanthine and 0.03 mM thymidine].

**Figure 1: Agarose Gel Electrophoresis**



Lane 1: Invitrogen™ TrackIt 1 Kb Plus DNA Ladder™  
Lane 2: ~ 200 ng of NR-50773

/Heather Couch/  
Heather Couch

01 AUG 2018

Program Manager or designee, ATCC Federal Solutions

ATCC®, on behalf of BEI Resources, hereby represents and warrants that the material provided under this certificate has been subjected to the tests and procedures specified and that the results described, along with any other data provided in this certificate, are true and accurate to the best of ATCC®'s knowledge.

ATCC® is a trademark of the American Type Culture Collection.  
You are authorized to use this product for research use only. It is not intended for human use.

