

Monoclonal Anti-*Toxoplasma gondii* ROP2 Protein, Clone T5 2D1 (produced *in vitro*)

Catalog No. NR-50265

Product Description: Antibody Class: IgG1k

Mouse monoclonal antibody prepared against the rhopty protein 2 (ROP2) of *Toxoplasma gondii* (*T. gondii*) clone T5 2D1 was purified from the hybridoma supernatant by protein G affinity chromatography.

Lot¹: 70002331

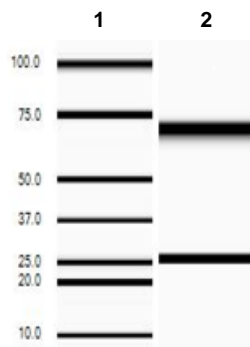
Manufacturing Date: 03MAR2017

TEST	SPECIFICATIONS	RESULTS
Antibody Class Determination	Report results	IgG1k
Experion Pro260 Analysis Average Purity	Correct molecular weight (MW) for heavy and light chains Report results	Correct molecular weight (MW) for heavy and light chains (Figure 1) 97.4% pure
Concentration by Spectrophotometer at OD₂₈₀	≥ 1.0 mg per mL	1.3 mg per mL
Functional Activity by Immunofluorescence Assay² <i>T. gondii</i> infected human skin fibroblast cells with NR-50265 <i>T. gondii</i> infected human skin fibroblast cells with FITC-conjugated goat anti-mouse IgG	Reactive Nonreactive	Reactive; immunostaining of rhoptries within parasitophorous vacuole (Figure 2) Nonreactive; no specific staining of parasites
Sterility	0.22 µm filter-sterilized	0.22 µm filter-sterilized

¹Mouse monoclonal antibody was purified using protein G affinity chromatography from supernatants obtained from mouse hybridoma clone T5 2D1 adapted to serum-free media.

²Specific labeling of *T. gondii* cells with NR-50265 and FITC was observed after infection of human skin fibroblast cells (ATCC® CRL-1634™) with *T. gondii* (ATCC® PRA-310™). NR-50265 was used at a dilution of 1:500, followed by FITC-conjugated goat anti-mouse IgG (Invitrogen® A16073) as secondary antibody (1:2000).

Figure 1: Experion Pro260 Analysis



Lane 1: Pro260 Ladder
Lane 2: NR-50265

Figure 2: Immunofluorescence Assay of *T. gondii* Infected Fibroblast Cells



07 MAY 2018

Program Manager or designee, ATCC Federal Solutions

ATCC®, on behalf of BEI Resources, hereby represents and warrants that the material provided under this certificate has been subjected to the tests and procedures specified and that the results described, along with any other data provided in this certificate, are true and accurate to the best of ATCC®'s knowledge.

ATCC® is a trademark of the American Type Culture Collection.
You are authorized to use this product for research use only. It is not intended for human use.

