

***Staphylococcus caprae*, Strain M23864:W1**

Catalog No. HM-143

Product Description: *Staphylococcus caprae* (*S. caprae*), strain M23864:W1 was isolated from human skin.

Lot^{1,2}: 70009105

Manufacturing Date: 05OCT2017

| TEST | SPECIFICATIONS | RESULTS |
|--|--|--|
| Phenotypic Analysis Cellular morphology Colony morphology ³ Motility (wet mount) | Gram-positive cocci Report results Report results | Gram-positive cocci Circular, convex, entire, smooth and white (Figure 1) Non-motile |
| Genotypic Analysis Sequencing of 16S ribosomal RNA gene (1490 base pairs) Digital DNA-DNA hybridization (dDDH) ⁵ | ≥ 99% sequence identity to <i>S. caprae</i> , strain M23864:W1 (GenBank: ACJB01000071.1) ≥ 70% for species identification | 99.9% sequence identity to <i>S. caprae</i> , strain M23864:W1 (GenBank: ACJB01000071.1) ⁴ <i>S. caprae</i> (96.3%) ⁶ |
| Purity (post-freeze)⁷ | Consistent with expected colony morphology | Consistent with expected colony morphology |
| Viability (post-freeze)³ | Growth | Growth |

¹Quality control of HMP material is only performed to demonstrate that the material distributed by BEI Resources is identical to the deposited material. It should not be considered a complete characterization of the deposited organism.

²*S. caprae*, strain M23864:W1 was deposited by Professor Sarah K. Highlander, Department of Molecular Virology and Microbiology, Baylor College of Medicine, Houston, Texas, USA. HM-143 lot 70009105 was produced by inoculation of BEI Resources HMS-143 lot 58956025 into Brain Heart Infusion broth and grown 1 day at 37°C in an aerobic atmosphere. Broth inoculum was added to Tryptic Soy agar with 5% defibrinated sheep blood kolles, which were grown 1 day at 37°C in an aerobic atmosphere to produce this lot.

³1 day at 37°C in an aerobic atmosphere on Tryptic Soy agar with 5% defibrinated sheep blood

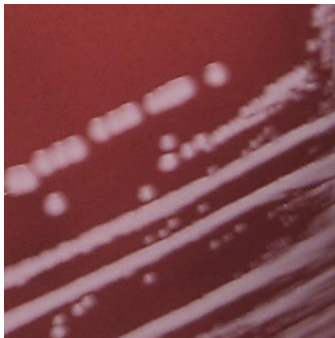
⁴Also consistent with other *Staphylococcus* species

⁵Relatedness between bacterial strains has traditionally been determined using DDH. For additional information, refer to Auch, A.F., et al. "Digital DNA-DNA Hybridization for Microbial Species Delineation by Means of Genome-to-Genome Sequence Comparison." *Stand. Genomic Sci.* 2 (2010): 117-134, PubMed: 21304684.

⁶The required whole genome sequence for the type strain of this species is not available. *Staphylococcus caprae*, strain 9557 (GenBank: [JXXP00000000.1](https://www.ncbi.nlm.nih.gov/nuclot/JXXP00000000.1)) was used for dDDH analysis.

⁷Purity of this lot was assessed for 7 days at 37°C in an aerobic atmosphere with 5% CO₂ on Tryptic Soy agar with 5% defibrinated sheep blood.

Figure 1: Colony Morphology



Date: 03 JAN 2018

Signature:



BEI Resources Authentication

ATCC[®], on behalf of BEI Resources, hereby represents and warrants that the material provided under this certificate has been subjected by ATCC[®] to the tests and procedures specified and that the results described, along with any other data provided in this certificate, are true and accurate to the best of ATCC[®]'s knowledge.

ATCC[®] is a trademark of the American Type Culture Collection.

You are authorized to use this product for research use only. It is not intended for human use.

