

***Escherichia coli*, Strain EDL933**

Catalog No. NR-11

(Derived from ATCC® 700927™)

Product Description: The enterohemorrhagic *Escherichia coli* (EHEC) is a gram-negative, rod-shaped bacterium that produces potent toxins, similar to those of *Shigella dysenteriae*, resulting in severe intestinal, kidney and central nervous system disease.

Lot¹: 3560110

Manufacturing Date: 05MAR2004

TEST	SPECIFICATIONS	RESULTS
Phenotypic Analysis Cellular morphology Colony morphology Tryptic soy agar Hektoen enteric agar Sorbitol-MacConkey agar CHROMagar™ O157 Analytical profile index (API® 20 E)	Gram-negative rods Circular, low convex, entire or undulate, translucent Bright yellow-orange Report results Report results Consistent with <i>Escherichia coli</i>	Gram-negative rods Circular, low convex, entire or undulate, translucent Bright yellow-orange (see Figure 1A) Colorless (see Figure 1B) Mauve (see Figure 1C) Consistent with <i>Escherichia coli</i>
Genotypic Analysis of Extracted Nucleic Acid Sequencing of 16S rRNA gene (~ 560 bp) PCR amplification of plasmid markers <i>hylA</i> (pO157) <i>elt</i> (pJY11) <i>esth, estp</i> (pCS1) EAF (pEAF) <i>bfpA</i> (pEAF) <i>invE</i> (pINV) CVD432 (pAA) <i>aggR</i> (pAA) PCR amplification of chromosomal markers <i>eaeA</i> <i>stx1</i> <i>sx2</i> <i>astA</i>	Consistent with <i>Escherichia coli</i> Positive Negative Negative Negative Negative Negative Negative Negative Positive Report results Report results Report results	Consistent with <i>Escherichia coli</i> Positive Negative Negative Negative Negative Negative Negative Negative Positive Positive Positive Negative
Viability (post-freeze)³	Growth	Growth

¹NR-11 was produced by inoculation of ATCC® 700927™ into Trypticase Soy Broth (BD 211768).

²Also consistent with *Shigella* species.

³16 hours at 37°C and aerobic atmosphere in LB Broth (ATCC® 60-2100).

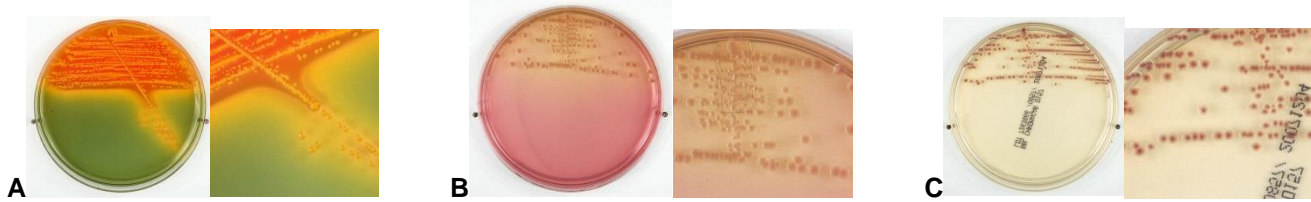


Figure 1

Date: 03 MAR 2008

Signature: Signature on File

Title: Technical Manager, BEI Authentication or designee

ATCC[®], on behalf of BEI Resources, hereby represents and warrants that the material provided under this certificate has been subjected to the tests and procedures specified and that the results described, along with any other data provided in this certificate, are true and accurate to the best of ATCC[®]'s knowledge.

ATCC[®] is a trademark of the American Type Culture Collection.

You are authorized to use this product for research use only. It is not intended for human use.