

**Polyclonal Anti-*Plasmodium falciparum* PfGRP78 (BiP), Anti-SGDEDVDSDEL Peptide (antiserum, Rat)**

**Catalog No. MRA-1247**

**Product Description:** Antiserum to a synthetic peptide (C-SGDEDVDSDEL) of glucose-regulated protein (immunoglobulin binding protein) from *Plasmodium falciparum* (*P. falciparum*) (PfGRP78 or BiP) conjugated to keyhole limpet hemocyanin using an introduced N-terminal cysteine, was produced by immunization of rats.

**Lot<sup>1</sup>: 62995137**

**Manufacturing Date: 23OCT2014**

TEST	SPECIFICATIONS	RESULTS
<b>Functional Activity</b>		
Western blot analysis <sup>2</sup>	Reactive	Reactive (~ 72 kDa; Figure 1)
Immunofluorescence assay with <i>P. falciparum</i> 3D7 <sup>3</sup>	Reactive	Reactive; fluorescence observed (Figure 2)
Indirect ELISA with synthetic peptide BSA-CSGDEDVDSDEL conjugate <sup>4</sup>	Reactive	Reactive

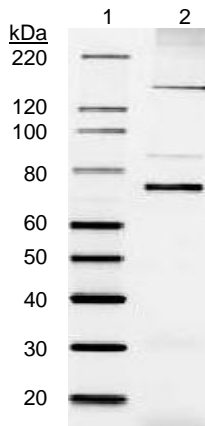
<sup>1</sup>Synthetic peptide KLH-(CSGDEDVDSDEL) conjugate (American Peptide Company 364293) using Freund's adjuvant (1x complete, 3x incomplete) was used to immunize rats. Serum from eight immunized rats were used for this lot.

<sup>2</sup>Using *P. falciparum*, strain FC27/PNG (BEI Resources MRA-914) and 1:500 dilution of MRA-1247. Secondary antibody was goat anti-rat IgG-HRP conjugate (Invitrogen® A10549).

<sup>3</sup>Specific labeling of *P. falciparum*, strain 3D7 (MRA-102) with FITC and DAPI and 1:125 dilution of MRA-1247

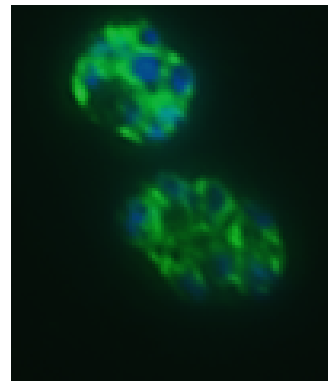
<sup>4</sup>Plates were coated with synthetic peptide BSA-CSGDEDVDSDEL conjugate in phosphate buffered saline (American Peptide Company 364296). Secondary antibody was goat anti-rat IgG-HRP conjugate.

**Figure 1: Western Blot Analysis**



Lane 1: Magic Mark™ XP Western Protein Standard (Invitrogen™)  
Lane 2: MRA-1247 (1:500) with 10.9 µg of MRA-914

**Figure 2: *P. falciparum* Immunofluorescence Assay**



**Date:** 06 APR 2017

**Signature:**

BEI Resources Authentication

ATCC®, on behalf of BEI Resources, hereby represents and warrants that the material provided under this certificate has been subjected to the tests and procedures specified and that the results described, along with any other data provided in this certificate, are true and accurate to the best of ATCC®'s knowledge.

ATCC® is a trademark of the American Type Culture Collection.

You are authorized to use this product for research use only. It is not intended for human use.



**BEI Resources**

[www.beiresources.org](http://www.beiresources.org)

E-mail: [contact@beiresources.org](mailto:contact@beiresources.org)

Tel: 800-359-7370

Fax: 703-365-2898