

Polyclonal Anti-*Francisella tularensis* Intracellular Growth Locus, Subunit A (IglA) Protein (antiserum, Rabbit)

Catalog No. NR-3194

Product Description: Rabbit polyclonal antiserum specific to a histidine-tagged recombinant form of the intracellular growth locus, subunit A protein (IglA) of *Francisella tularensis* (*F. tularensis*) was produced in rabbit.

Lot: 7701148

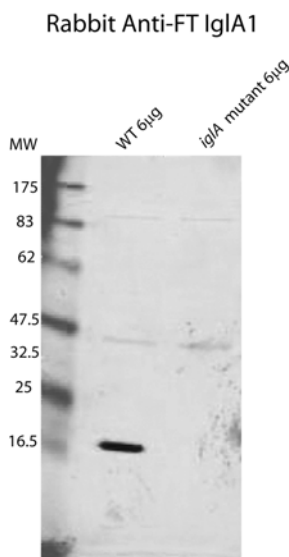
Manufacturing Date: 29NOV2006

TEST	SPECIFICATIONS	RESULTS
Functional Activity Western Blot using whole cell antigen (see Figure 1) ^{1,2} <i>F. tularensis</i> wild type (WT) <i>F. tularensis</i> Δ iglA mutant Western Blot titer <i>F. tularensis</i> WT	Reactive Not reactive Report results	Reactive Not reactive 1:5000

¹Visualized using a LI-COR[®] Biosciences Odyssey[®] Infrared Imaging System.

²Dilutions between 1:400 and 1:2000 are recommended.

Figure 1



Date: 07 AUG 2007

Signature: Signature on File

Title: Technical Manager, BEI Authentication or designee

ATCC[®], on behalf of BEI Resources, hereby represents and warrants that the material provided under this certificate has been subjected by the depositor to the tests and procedures specified and that the results described, along with any other data provided in this certificate, are true and accurate to the best of ATCC[®]'s knowledge.

ATCC[®] is a trademark of the American Type Culture Collection.

You are authorized to use this product for research use only. It is not intended for human use.

Biodefense and Emerging Infections Research Resources Repository

P.O. Box 4137
 Manassas, VA 20108-4137 USA
www.beiresources.org

800-359-7370
 Fax: 703-365-2898
 E-mail: contact@beiresources.org