

Polyclonal Anti-*Plasmodium falciparum* Pfs16 (antiserum, Rabbit)

Catalog No. MRA-1276

Product Description: Antiserum to the sexual stage/gametocyte-specific antigen Pfs16 from *Plasmodium falciparum* (*P. falciparum*) was produced by immunization of rabbits with Pfs16.

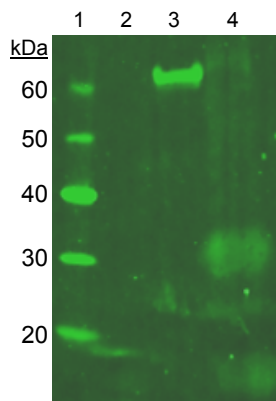
Lot¹: 64104285

Manufacturing Date: APR2016

TEST	SPECIFICATIONS	RESULTS
Functional Activity Western blot analysis ² Immunofluorescence assay with <i>P. falciparum</i> 3D7 (GL clone) ³ Indirect ELISA with <i>in vitro</i> generated Pfs16 protein or recombinant Pfs16 protein fused with MBP ⁴	Reactive Reactive Reactive	Reactive (Figure 1) Reactive; fluorescence observed (Figure 2) Reactive (Figures 3 and 4)

¹A recombinant His-tagged MBP (maltose binding protein)-Pfs16 fusion protein was digested with protease to release MBP and subjected to SDS-gel electrophoresis. The Pfs16 band was excised and used to immunize New Zealand white rabbits.
²Using SDS gel-extracted Pfs16, MBP-Pfs16 fusion protein, and *in vitro* generated Pfs16 from *P. falciparum*, strain 3D7 (GL clone) (BEI Resources MRA-1001), with a 1:5000 dilution of MRA-1276
³Specific labeling of MRA-1001 with Alexa Fluor® 488 and 2,4-diamidino-2-phenylindole (DAPI) and a 1:1000 dilution of MRA-1276
⁴Plates were coated with 10 µg/mL of *in vitro* generated Pfs16 protein from MRA-1001 (Figure 3) or 5 µg/mL of MBP-Pfs16 fusion protein (Figure 4). Secondary antibody was goat anti-rabbit IgG-HRP conjugate (Southern Biotech 4030-05).

Figure 1: Western Blot Analysis



Lane 1: MW markers
 Lane 2: SDS gel-extracted Pfs16
 Lane 3: MBP-Pfs16 fusion protein
 Lane 4: Pfs16 from MRA-1001

Figure 2: *P. falciparum* Immunofluorescence Assay

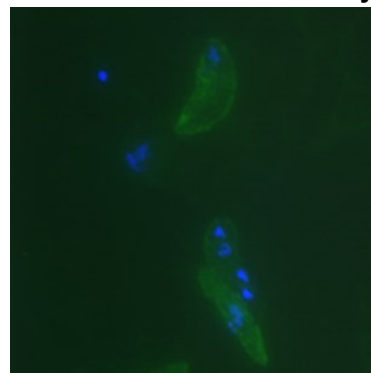


Figure 3: ELISA with Pfs16

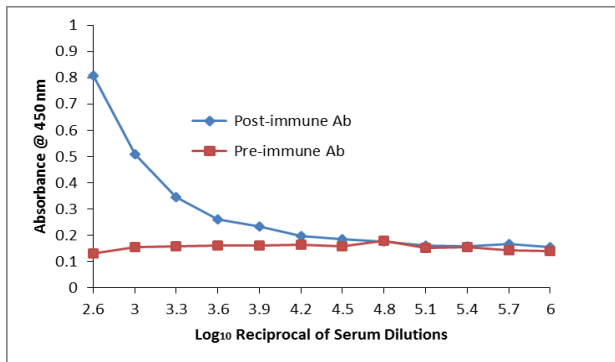
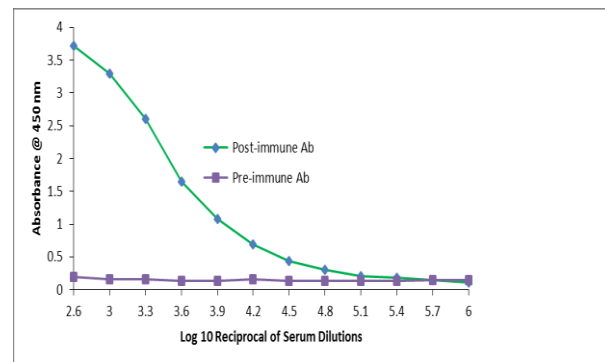


Figure 4: ELISA with MBP-Pfs16 Fusion Protein



Date: 25 JAN 2017

Signature:

BEI Resources Authentication

ATCC®, on behalf of BEI Resources, hereby represents and warrants that the material provided under this certificate has been subjected to the tests and procedures specified and that the results described, along with any other data provided in this certificate, are true and accurate to the best of ATCC®'s knowledge.

ATCC® is a trademark of the American Type Culture Collection.

You are authorized to use this product for research use only. It is not intended for human use.

