

Sporothrix globosa, Isolate 7

Catalog No. NR-41308

Product Description: *Sporothrix globosa* (*S. globosa*), isolate 7 was obtained from human skin tissue in China in January 2012.

Lot¹: 61697593

Manufacturing Date: 13JUN2013

TEST	SPECIFICATIONS	RESULTS
Phenotypic Analysis Morphology ² Raffinose assimilation ³	Report results Negative	Ellipsoidal with brown pigmentation, hyaline, guttulate hyphae (Figure 1) Negative
Genotypic Analysis Partial sequencing of 28S ribosomal RNA (rRNA) gene (~ 580 base pairs) Sequencing of beta-tubulin gene (~ 370 base pairs) Sequencing of calmodulin gene (~ 530 base pairs)	Consistent with <i>S. globosa</i> Consistent with <i>S. globosa</i> Consistent with <i>S. globosa</i>	Consistent with <i>S. globosa</i> ⁴ Consistent with <i>S. globosa</i> ⁵ Consistent with <i>S. globosa</i> ⁶
Purity⁷ Potato Dextrose agar at 25°C Nutrient broth with 0.1% Yeast Extract at 25°C Nutrient broth with 0.1% Yeast Extract at 37°C	No bacterial growth No bacterial growth No bacterial growth	No bacterial growth No bacterial growth No bacterial growth
Viability (post-freeze)²	Growth	Growth

¹NR-41308 was produced by growth of the deposited material on Potato Dextrose agar and Emmons' Modified Sabouraud agar in an aerobic atmosphere at 25°C for 21 days to produce this lot. Mycelial plugs from both plates were added to 10% glycerol.

²3 days at 25°C in an aerobic atmosphere on Potato Dextrose agar

³5 days at 25°C in an aerobic atmosphere. Nocardia Purple broth with raffinose differentiates *S. globosa* from *S. schenckii* based on the ability of *S. schenckii* isolates to utilize raffinose as a sole carbon source, resulting in a yellow color. *S. globosa* isolates will remain purple. [Marimon, R., et al. "Sporothrix basiliensis, *S. globosa*, and *S. mexicana*, Three New *Sporothrix* Species of Clinical Interest." *J. Clin. Microbiol.* 45 (2007): 3198-3206. PubMed: 17687013.]. Positive control tube (ATCC® 20282™) was yellow.

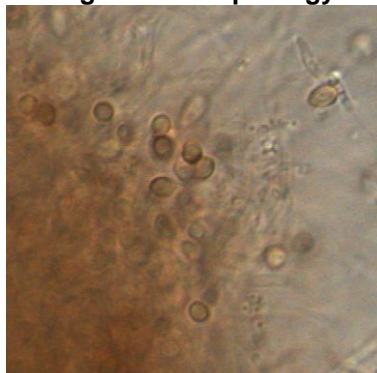
⁴100% identical to *S. globosa*, strain MYA-4913 (GenBank: KC294291), type strain sequence was not available.

⁵98.6% identical to *S. globosa*, strain CBS 129724 (GenBank: KC113238.1), type strain sequence was not available, also consistent with *S. schenckii*

⁶100% identical to *S. globosa*, type strain CBS 120340 (GenBank: KP101459.1).

⁷Clarity of broth and lack of growth on agar was determined by visual inspection after 3 days at 25°C and 37°C in an aerobic atmosphere.

Figure 1: Morphology



Date: 22 FEB 2016

Signature:



BEI Resources Authentication

ATCC[®], on behalf of BEI Resources, hereby represents and warrants that the material provided under this certificate has been subjected to the tests and procedures specified and that the results described, along with any other data provided in this certificate, are true and accurate to the best of ATCC[®]'s knowledge.

ATCC[®] is a trademark of the American Type Culture Collection.

You are authorized to use this product for research use only. It is not intended for human use.

