

**Vector Containing the Fructose-Bisphosphate Aldolase Gene Fragment from *Schistosoma haematobium***

**Catalog No. NR-49835**

This reagent is the tangible property of the U.S. Government.

**Product Description:** NR-49835 is the fructose-bisphosphate aldolase (FBA) gene fragment from *Schistosoma haematobium* (*S. haematobium*), cloned into Gateway® Entry Vector pDONR™ 222.

**Lot<sup>1,2</sup>: 63792183**

**Manufacturing Date: 20JUL2015**

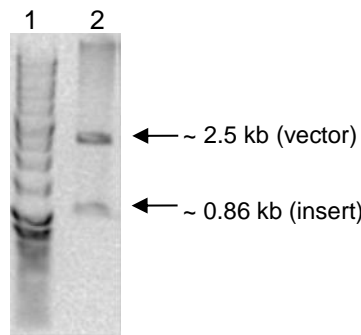
TEST	SPECIFICATIONS	RESULTS
<b>Agarose Gel Electrophoresis</b> Digestion with <i>BsrG</i> I <sup>3</sup>	~ 0.86 kb (insert); ~ 2.5 kb (vector)	~ 0.86 kb; ~ 2.5 kb (Figure 1)
<b>OD<sub>260</sub>/OD<sub>280</sub> Ratio</b>	1.70 to 2.20	1.81

<sup>1</sup>QC testing was performed by the Biomedical Research Institute, Rockville, Maryland (NIH-NIAID Contract HHSN272201000005I)

<sup>2</sup>Plasmid DNA was extracted from overnight bacterial culture in Luria-Bertani (LB) broth with 50 µg/mL kanamycin, using a commercially available kit.

<sup>3</sup>2 µg of DNA was digested with *BsrG* I for one hour at 37°C.

**Figure 1: Restriction Enzyme Digestion of FBA Gene Fragment**



Lane 1: 1 kb ladder  
Lane 2: 2 µg of digested vector DNA

**Date:** 04 JAN 2016

**Signature:** 

BEI Resources Authentication

ATCC®, on behalf of BEI Resources, hereby represents and warrants that the material provided under this certificate has been subjected by the contributor to the tests and procedures specified and that the results described, along with any other data provided in this certificate, are true and accurate to the best of ATCC®'s knowledge.

ATCC® is a trademark of the American Type Culture Collection. You are authorized to use this product for research use only. It is not intended for human use.

