

Polyclonal Anti-Shiga Toxin Type 1 Subunit A (IgG, Rabbit)

Catalog No. NR-4678

This reagent is the tangible property of the U.S. Government.

Product Description: Polyclonal immunoglobulin G antibodies to the A subunit of Shiga toxin type 1 (Stx1) were produced in rabbit and purified protein G affinity chromatography.

Lot¹: 61145401

Manufacturing Date: 21JUL2015

TEST	SPECIFICATIONS	RESULTS
Appearance	Clear and colorless	Clear and colorless
SDS-PAGE (SYPRO Orange Densitometry)	Protein band of interest represents >95% of total staining intensity above background	Purified IgG represents >95% of total staining intensity above background (Figure 1)
Concentration by Bicinchoninic Acid Protein Assay ²	Report results	1.0 mg per mL
Functional Activity by Western Blot Analysis ³ Stx1A Carbonic anhydrase	Reactive Non-reactive	Reactive (Figure 2) Non-reactive
Antibody Adsorption Titration Analysis (ELISA) Stx1A Carbonic anhydrase	Reactive Non-reactive	Reactive (Figure 3) Non-reactive
Sterility	0.22 µm filter-sterilized	0.22 µm filter-sterilized

¹Manufactured by Uniformed Services University of the Health Sciences, Bethesda, Maryland, USA

²Performed with Pierce BCA Protein Assay Kit™ and immunoglobulin standard curve

³Using Shiga toxin type 1 subunit A and NR-4678

Date: 16 DEC 2015

Signature:



BEI Resources Authentication

ATCC®, on behalf of BEI Resources, hereby represents and warrants that the material provided under this certificate has been subjected by the contractor to the tests and procedures specified and that the results described, along with any other data provided in this certificate, are true and accurate to the best of ATCC®'s knowledge.

ATCC® is a trademark of the American Type Culture Collection.

You are authorized to use this product for research use only. It is not intended for human use.



Figure 1: SDS-PAGE

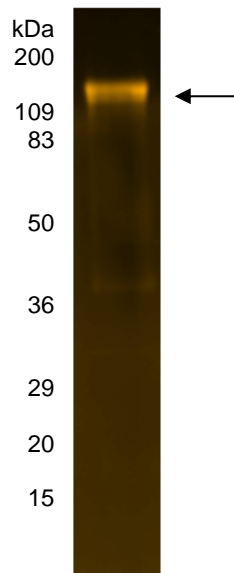
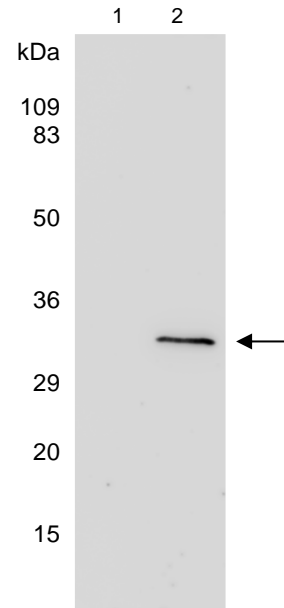


Figure 2: Western Blot



Lane 1: Carbonic Anhydrase (Negative Control)
Lane 2: Stx1A and NR-4678

Figure 3: Antibody Adsorption Titration Analysis (ELISA)

