

**Genomic DNA from *Salmonella enterica* subsp. *enterica*, 2004 Pennsylvania Tomato Outbreak, Serovar Javiana, Isolate 1**

**Catalog No. NR-4577**

**Product Description:** Genomic DNA was obtained from a preparation of *Salmonella enterica* (*S. enterica*) subsp. *enterica* serovar Javiana that was isolated from the stool of a patient with diarrhea during the 2004 *Salmonella* outbreak in Pennsylvania (PA).

**Lot<sup>1</sup>: 57946610**

**Manufacturing Date: 16OCT2007**

TEST	SPECIFICATIONS	RESULTS
Sequencing of 16S Ribosomal RNA Gene (~ 1380 bp)	Consistent with <i>S. enterica</i> subsp. <i>enterica</i>	Consistent with <i>S. enterica</i> subsp. <i>enterica</i>
Agarose Gel Electrophoresis	High molecular weight chromosomal DNA	High molecular weight chromosomal DNA (Figure 1)
Concentration by PicoGreen <sup>®</sup> Measurement	4 to 6 µg in 25 to 100 µL per vial	5.5 µg in 41 µL per vial (133 µg/mL)
Functional Activity by PCR Amplification 16S ribosomal RNA gene	~ 1500 bp amplicon	~ 1500 bp amplicon
OD <sub>260</sub> /OD <sub>280</sub> Ratio	1.7 to 1.9	1.8
Bacterial Inactivation 10% of total yield plated on Tryptic Soy Agar <sup>2,3</sup>	No viable bacteria detected	No viable bacteria detected

<sup>1</sup>*S. enterica* subsp. *enterica*, 2004 Pennsylvania Tomato Outbreak, Serovar Javiana, Isolate 1 was deposited by Carol H. Sandt, Molecular Microbiology Section, Bureau of Laboratories, PA Department of Health, Lionville, PA. The bacterial preparation used for extraction of genomic DNA was produced by broth (Tryptic Soy Broth, BD 211825) culture of the deposited material. After incubation for 24 hours at 37°C and aerobic atmosphere, genomic DNA was extracted using proprietary technology.

<sup>2</sup>7 days at 37°C in an aerobic atmosphere.

<sup>3</sup>An extraction procedure was used that has been shown to consistently inactivate 100% of Gram-negative bacteria.

**Date:** 20 MAR 2008

**Signature:** Signature on File

**Title:** Technical Manager, BEI Authentication or designee

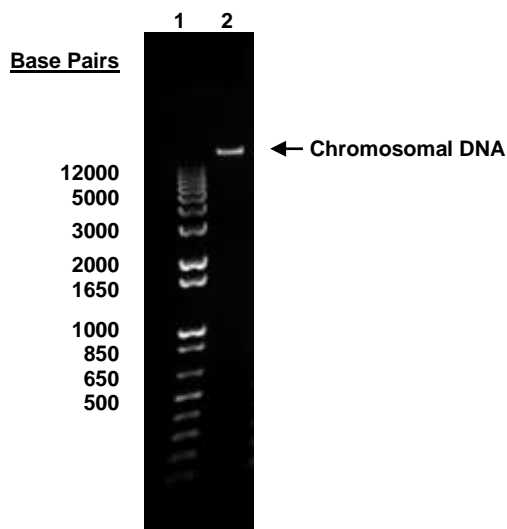
ATCC<sup>®</sup>, on behalf of BEI Resources, hereby represents and warrants that the material provided under this certificate has been subjected to the tests and procedures specified and that the results described, along with any other data provided in this certificate, are true and accurate to the best of ATCC<sup>®</sup>'s knowledge.

ATCC<sup>®</sup> is a trademark of the American Type Culture Collection.

You are authorized to use this product for research use only. It is not intended for human use.



Figure 1



Lane 1: Invitrogen™ 1 Kb Plus DNA Ladder™  
Lane 2: 200 ng of NR-4577