

## Genomic DNA from *Campylobacter jejuni* subsp. *jejuni*, Strain AS-84-79

**Catalog No. NR-4115**

**Product Description:** Genomic DNA was isolated from a preparation of *Campylobacter jejuni* subsp. *jejuni*, strain AS-84-79.

**Lot<sup>1</sup>: 7731469**

**Manufacturing Date: 22JAN2007**

TEST	SPECIFICATIONS	RESULTS
<b>Sequencing of 16S Ribosomal RNA Gene</b> (~ 615 base pairs)	Consistent with <i>Campylobacter jejuni</i>	Consistent with <i>Campylobacter jejuni</i> <sup>2</sup>
<b>Agarose Gel Electrophoresis</b>	High molecular weight chromosomal DNA	High molecular weight chromosomal DNA (Figure 1)
<b>Concentration by PicoGreen<sup>®</sup> Measurement</b>	4 to 6 µg in 25 to 100 µL per vial	5.8 µg in 72 µL per vial (80 µg/mL)
<b>Functional Activity by PCR Amplification</b> 16S ribosomal RNA gene	~ 1500 bp amplicon	~ 1500 bp amplicon
<b>OD<sub>260</sub>/OD<sub>280</sub> Ratio</b>	1.7 to 1.9	1.8
<b>Bacterial Inactivation</b> 10% of total yield plated on Trypticase Soy Agar with 5% defibrinated sheep blood <sup>3,4</sup>	No viable bacteria detected	No viable bacteria detected

<sup>1</sup>The bacterial preparation used for extraction of genomic DNA was produced by inoculation of ATCC<sup>®</sup> 33292™ (Lot 76681) into Brucella Broth (BD 211088) on Tryptic Soy Agar (BD 236950) with 5% defibrinated sheep blood Kolle. After incubation for 72 hours at 37°C in a microaerophilic (3–5% O<sub>2</sub> and 5% CO<sub>2</sub>) atmosphere, genomic DNA was extracted using proprietary technology.

<sup>2</sup>Also consistent with *Campylobacter coli*.

<sup>3</sup>Incubated for 7 days at 37°C and microaerophilic (3–5% O<sub>2</sub> and 5% CO<sub>2</sub>) atmosphere.

<sup>4</sup>An extraction procedure was used that has been shown to consistently inactivate 100% of Gram-negative bacteria.

**Date:** 06 AUG 2007

**Signature:** Signature on File

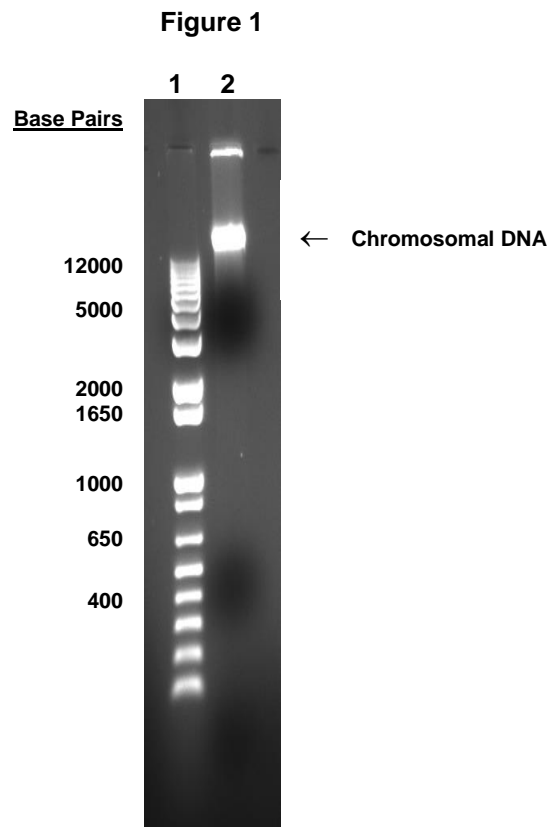
**Title:** Technical Manager, BEI Authentication or designee

ATCC<sup>®</sup>, on behalf of BEI Resources, hereby represents and warrants that the material provided under this certificate has been subjected to the tests and procedures specified and that the results described, along with any other data provided in this certificate, are true and accurate to the best of ATCC<sup>®</sup>'s knowledge.

ATCC<sup>®</sup> is a trademark of the American Type Culture Collection.

You are authorized to use this product for research use only. It is not intended for human use.





Lane 1: Invitrogen™ 1Kb Plus DNA Ladder™  
Lane 2: 200 ng of NR-4115