

Expression Vector Containing the Macrophage Expressed Protein 1 Gene Fragment from *Biomphalaria glabrata*, Recombinant in *Escherichia coli*

Catalog No. NR-41871

This reagent is the tangible property of the U.S. Government.

Product Description: NR-41871 is an expression vector (pCR[®]2.1-TOPO[®]) containing a fragment of the macrophage expressed protein 1 (Mpeg 1) gene from *Biomphalaria glabrata* transformed into *Escherichia coli* (*E. coli*), strain DH5 α .

Lot^{1,2}: 10032012

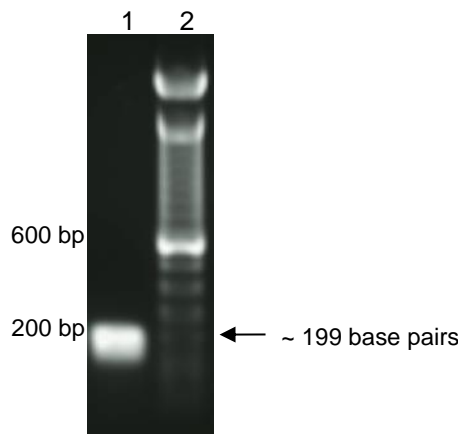
Manufacturing Date: 04SEP2012

TEST	SPECIFICATIONS	RESULTS
Qualification by PCR Amplification with Mpeg 1 gene specific primer pair	199 base pair amplicon	~ 199 base pair amplicon (Figure 1)

¹QC testing was performed by the Biomedical Research Institute, Rockville, MD (NIH-NIAID Contract HHSN272201000005I)

²Plasmid DNA was extracted from *E. coli* culture grown overnight in Luria-Bertani (LB) broth with 100 μ g/mL ampicillin, using a commercially available kit.

Figure 1: Amplification of Mpeg1 Gene Fragment



Lane 1: 100 base pair ladder
Lane 2: 100 ng of amplified PCR product

Date: 07 OCT 2014

Signature:

Title: Technical Manager, BEI Authentication or designee

ATCC[®], on behalf of BEI Resources, hereby represents and warrants that the material provided under this certificate has been subjected by the contributor to the tests and procedures specified and that the results described, along with any other data provided in this certificate, are true and accurate to the best of ATCC[®]'s knowledge.

ATCC[®] is a trademark of the American Type Culture Collection.

You are authorized to use this product for research use only. It is not intended for human use.

