

Monoclonal Anti-Shiga Toxin 2 Subunit A (produced *in vitro*) (Similar to 11F11)

Catalog No. NR-845

This reagent is the tangible property of the U.S. Government.

Product Description: Mouse monoclonal antibody to the A subunit of Shiga-like toxin 2 from *Escherichia coli* was purified by protein A or affinity chromatography from supernatants obtained from a mouse hybridoma clonal cell line (ATCC[®] CRL-1908[™]) that produces monoclonal antibody 11F11.

Lot: 4469047

Manufacturing Date: AUG2005

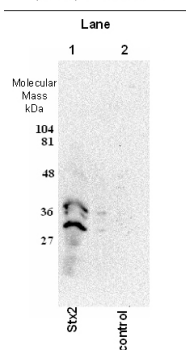
TEST	SPECIFICATIONS	RESULTS
Appearance	Clear and colorless No particulate matter	Clear and colorless No particulate matter
SDS-PAGE (SYPRO Orange densitometer scan)	Dominant band ~ 150 kDa > 90% pure	Dominant band ~ 150 kDa > 90% pure
Concentration by Bicinchoninic Acid Protein Assay	1 mg/mL	1 mg/mL
Functional Activity Western Blot ¹ Shiga-like toxin 2 Subunit A Shiga-like toxin 1 Subunit A Shiga-like toxin 2 ELISA titer ² Shiga-like toxin 2 Ricin holotoxin	Reactive Not reactive Reactive Report results Not reactive	Reactive Not reactive Reactive with both reduced (see Figure 1) and unreduced toxin > 1:10,000 Not reactive

¹A dilution of 1:5000 is recommended.

²A dilution of 1:10000 is recommended.

Figure 1

MAb 11F11
 anti-Shiga Toxin 2
 (stx2) A subunit



Date: 06 NOV 2014

Signature:



Title: Technical Manager, BEI Authentication

ATCC[®], on behalf of BEI Resources, hereby represents and warrants that the material provided under this certificate has been subjected by the contractor to the tests and procedures specified and that the results described, along with any other data provided in this certificate, are true and accurate to the best of ATCC[®]'s knowledge.

ATCC[®] is a trademark of the American Type Culture Collection.
You are authorized to use this product for research use only. It is not intended for human use.

