

***Paenibacillus barengoltzii*, Strain CC33_002B**

Catalog No. HM-1049

Product Description: *Paenibacillus barengoltzii* (*P. barengoltzii*), strain CC33_002B was isolated in October 2010 from colonic biopsy tissue of a human subject in Victoria, British Columbia, Canada.

Lot^{1,2}: 62072054

Manufacturing Date: 07OCT2013

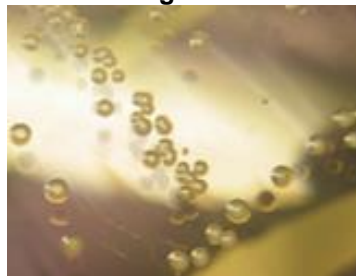
TEST	SPECIFICATIONS	RESULTS
Phenotypic Analysis Cellular morphology Colony morphology ³ Motility (wet mount)	Gram-positive rods Report results Report results	Gram-positive rods Circular, low convex, entire, smooth, translucent and cream (Figure 1) Motile
Genotypic Analysis Sequencing of 16S ribosomal RNA gene (~ 710 base pairs)	≥ 99% identical to depositor's sequence Consistent with <i>P. barengoltzii</i>	≥ 99% identical to depositor's sequence Consistent with <i>P. barengoltzii</i>
Viability (post-freeze)³	Growth	Growth

¹Quality control of HMP material is only performed to demonstrate that the material distributed by BEI Resources is identical to the deposited material. It should not be considered a complete characterization of the deposited organism.

²*P. barengoltzii*, strain CC33_002B was deposited by Emma Allen-Vercoe, PhD, Department of Molecular and Cellular Biology, University of Guelph, Guelph, Ontario, Canada. HM-1049 was produced by inoculation of the deposited material into Nutrient broth and incubated for 71 hours at 30°C in an aerobic atmosphere. Broth inoculum was added to Nutrient agar kolles which were grown 68 hours at 30°C in an aerobic atmosphere to produce this lot. Purity of this lot was assessed for 7 days under propagation conditions.

³68 hours at 30°C in an aerobic atmosphere on Nutrient agar

Figure 1



Date: 10 MAR 2014

Signature:

Title: Technical Manager, BEI Authentication or designee

ATCC®, on behalf of BEI Resources, hereby represents and warrants that the material provided under this certificate has been subjected to the tests and procedures specified and that the results described, along with any other data provided in this certificate, are true and accurate to the best of ATCC®'s knowledge.

ATCC® is a trademark of the American Type Culture Collection.

You are authorized to use this product for research use only. It is not intended for human use.

