

***Vibrio cholerae*, Strain CP1048(21) (Biovar El Tor)**

Catalog No. NR-28829

Product Description: *Vibrio cholerae* (*V. cholerae*), strain CP1048(21) was deposited as a serogroup O1, biovar El Tor strain that was isolated from a patient in Bangladesh in 2010.

Lot¹: 62023245

Manufacturing Date: 18SEP2013

TEST	SPECIFICATIONS	RESULTS
Phenotypic Analysis Cellular morphology Colony morphologies ^{2,3} Hemolysis ² Motility (wet mount) Biochemical characterization: VITEK [®] 2 System (GN Card) Analytical profile index (API [®] 20E)	Report results Report results Report results Report results Consistent with <i>V. cholerae</i> Consistent with <i>V. cholerae</i>	Gram-negative rods Colony type 1: Irregular, low convex, undulate, smooth and gray (Figure 1) Colony type 2: Circular, low convex, entire, smooth and gray (Figure 1) β-hemolytic Motile Consistent with <i>V. cholerae</i> Consistent with <i>V. cholerae</i>
Genotypic Analysis Sequencing of 16S ribosomal RNA gene (~ 1480 base pairs)	Consistent with <i>V. cholerae</i>	Consistent with <i>V. cholerae</i> ⁴
Viability (post-freeze)²	Growth	Growth

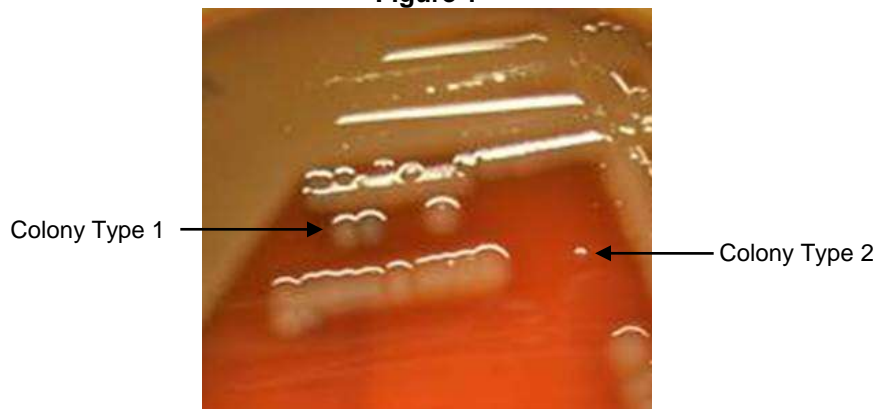
¹NR-28829 was produced by inoculation of the deposited material into Tryptic Soy broth and grown 24 hours in an aerobic atmosphere at 37°C. Broth inoculum was added to Tryptic Soy agar with 5% defibrinated sheep blood kolles which were grown 24 hours at 37°C and aerobic atmosphere to produce this lot. Purity of this lot was assessed for 7 days under propagation conditions.

²24 hours at 37°C and aerobic atmosphere on Tryptic Soy agar with 5% defibrinated sheep blood

³Two colony types were observed when NR-28829 was grown on Tryptic Soy agar with 5% defibrinated sheep blood in an aerobic atmosphere for 24 hours. Plating of the individual colony types, under the above conditions, indicated that they did not revert to the mixed colony type. The 16S gene of each colony type was sequenced and found to be consistent with *V. cholerae* and the Vitek GN Card showed identical results for both colony types.

⁴Also consistent with other *Vibrio* species

Figure 1



Certificate of Analysis for NR-28829

Date: 11 FEB 2014

Signature:



Title: Technical Manager, BEI Authentication or designee

ATCC[®], on behalf of BEI Resources, hereby represents and warrants that the material provided under this certificate has been subjected to the tests and procedures specified and that the results described, along with any other data provided in this certificate, are true and accurate to the best of ATCC[®]'s knowledge.

ATCC[®] is a trademark of the American Type Culture Collection.

You are authorized to use this product for research use only. It is not intended for human use.

