

**Polyclonal Anti-*Mycobacterium bovis*, Strain AF 2122/97 (ATCC® BAA-935™), CFP minus LAM (antiserum, Rabbit)**

**Catalog No. NR-34789**

This reagent is the tangible property of the U.S. Government.

**Product Description:** Polyclonal antiserum to the culture filtrate proteins minus lipoarabinomannan (CFP-LAM) of *Mycobacterium bovis*, strain AF 2122/97 (ATCC® BAA-935™), was produced in rabbits. The antiserum is reported to be active in ELISA.

**Lot: 60732242**

**Manufacturing Date: 19JUN2012**

QC testing was performed by Colorado State University and the documentation for lot 12.anti-bovisCFP(-)LAM.5.22.rp is attached.

ATCC®, on behalf of BEI Resources, hereby represents and warrants that the material provided under this certificate has been subjected by the contractor to the tests and procedures specified and that the results described, along with any other data provided in this certificate, are true and accurate to the best of ATCC®'s knowledge.

ATCC® is a trademark of the American Type Culture Collection.

You are authorized to use this product for research use only. It is not intended for human use.



## TB Contract Antibody QC Sheet

### General Information:

Product: Rabbit Polyclonal Antibody against M. bovis CFP

Lot Number: 12.anti-bovisCFP.5.22.rp

Species: *Mycobacterium bovis*

Strain: BAA935

Type: Culture Supernatant

### Production Information:

Cell Line: \_\_\_\_\_ SOP#: \_\_\_\_\_

Notebook/pp: \_\_\_\_\_

Amount of CS Harvested: \_\_\_\_\_

Clarity: clear

IgG Purification: \_\_\_\_\_ SOP#: \_\_\_\_\_ Notebook/pp: \_\_\_\_\_, \_\_\_\_\_

### QC Information:

Tested Against: Subcellular Fractions SOP#: AB102

Notebook/pp: Keri Wright/Charis E. Ackerson, Polyclonal Antibody Notebook #3, pgs 21-23, 31-35, 38-39

Titer: 1:25000

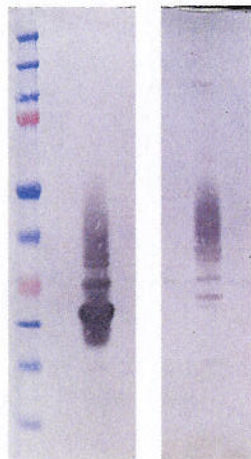
Western blot: X

ELISA: \_\_\_\_\_

### Special Instructions:

QC Western blot:

1. Protein Standard
2. M. bovis CFP
3. M. tb CFP



**Aliquot Information:** 1 x 168 ml\*

\*Aliquot information reflects aliquots made at time of QC. 0.25ml aliquots are made for distribution.

Keri Ann Ackerson  
Research Associate / Date

Charis E. Ackerson 6/18/2013  
Lab Supervisor / Date