

***Toxoplasma gondii* SAG1 Primer Set**

Catalog No. NR-15426

This reagent is the tangible property of the U.S. Government.

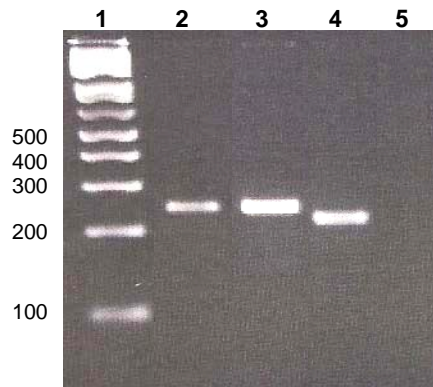
Product Description: NR-15426 contains forward and reverse primers that specifically amplify the SAG1 gene of *Toxoplasma gondii* from Type I, II and III strains.

Lot: 58951686

Manufacturing Date: 15DEC2009

TEST	SPECIFICATIONS	RESULTS
PCR Amplification (Figure 1) Type I (DNA extracted from BEI Resources NR-10272) Type II (BEI Resources NR-15430) Type III (BEI Resources NR-15431) Negative control [DNA extracted from <i>Acinetobacter iwoffii</i> (ATCC® 17925™)]	~ 270 bp amplicon ~ 270 bp amplicon ~ 240 bp amplicon No amplicons	~ 270 bp amplicon ~ 270 bp amplicon ~ 240 bp amplicon No amplicons
Specificity	Specific for <i>T. gondii</i> SAG1	Specific for <i>T. gondii</i> SAG1
Concentration of each primer (µM)	Report results	5 µM

Figure 1



Lane 1: Invitrogen™ TrackIt 1 Kb Plus DNA Ladder™
 Lane 2: *T. gondii*, type I (DNA extracted from BEI Resources NR-10272)
 Lane 3: *T. gondii*, type II (BEI Resources NR-15430)
 Lane 4: *T. gondii*, type III (BEI Resources NR-15431)
 Lane 5: Negative control [DNA extracted from *Acinetobacter iwoffii* (ATCC® 17925™)]

Certificate of Analysis for NR-15426

Date: 17 JUL 2012

Signature:



Title: Technical Manager, BEI Authentication or designee

ATCC[®], on behalf of BEI Resources, hereby represents and warrants that the material provided under this certificate has been subjected to the tests and procedures specified and that the results described, along with any other data provided in this certificate, are true and accurate to the best of ATCC[®]'s knowledge.

ATCC[®] is a trademark of the American Type Culture Collection.

You are authorized to use this product for research use only. It is not intended for human use.

