

Streptococcus sp., Strain C150

Catalog No. HM-248

Product Description: *Streptococcus* sp., strain C150 was isolated in June 2006 from expectorated sputum from a 34-year-old female patient with cystic fibrosis.

Lot^{1,2}: 60771438

Manufacturing Date: 04MAR2012

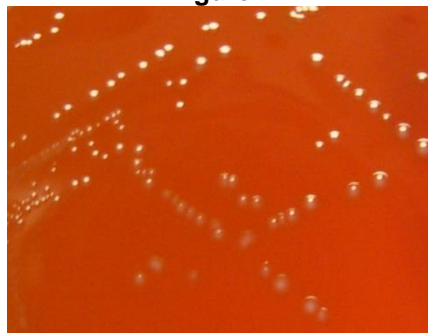
TEST	SPECIFICATIONS	RESULTS
Phenotypic Analysis Cellular morphology Colony morphology ³	Report results Report results	Gram-positive cocci Circular, convex, entire, gray and smooth (Figure 1)
Genotypic Analysis Sequencing of 16S ribosomal RNA gene (~ 1400 base pairs)	≥ 99% identical to GenBank: ACRI01000045 (<i>Streptococcus</i> sp., strain C150)	≥ 99% identical to GenBank: ACRI01000045 (<i>Streptococcus</i> sp., strain C150)
Viability (post-freeze)³	Growth	Growth

¹Quality control of HMP material is only performed to demonstrate that the material distributed by BEI Resources is identical to the deposited material. It should not be considered a complete characterization of the deposited organism.

²*Streptococcus* sp., strain C150 was deposited by Michael G. Surette, Professor, Department of Microbiology and Infectious Diseases, University of Calgary, Alberta, Canada. The deposited material was inoculated into Tryptic Soy Broth and incubated for 48 hours at 37°C in an aerobic atmosphere with 5% CO₂. Broth inoculum was added to Kolles which were grown for 72 hours at 37°C in 5% CO₂ to produce this lot.

³48 hours at 37°C in 5% CO₂ on Tryptic Soy Agar with 5% sheep blood

Figure 1



Date: 18 JUN 2012

Signature:

Title:

Technical Manager, BEI Authentication or designee

ATCC®, on behalf of BEI Resources, hereby represents and warrants that the material provided under this certificate has been subjected to the tests and procedures specified and that the results described, along with any other data provided in this certificate, are true and accurate to the best of ATCC®'s knowledge.

ATCC® is a trademark of the American Type Culture Collection.

You are authorized to use this product for research use only. It is not intended for human use.

