

Polyclonal Anti-*Mycobacterium* ML0317/GroEL2 (antiserum, Rabbit)**Catalog No. NR-19363**

This reagent is the tangible property of the U.S. Government.

Product Description:

Antibody Designation: α -Rv0440

Polyclonal antiserum to chaperonin protein (also referred to as Rv0440, GroEL2 and 65 kDa heat shock protein) of *Mycobacterium tuberculosis* (*M. tuberculosis*) was produced in rabbits. The *M. leprae* homologue of Rv0440, ML0317, has 94% amino acid identity with the *M. tuberculosis* protein and shows the same reactivity with the polyclonal antiserum as Rv0440. The antiserum is reported to be active in ELISA and Western Blot assays.

Lot: rp.Rv0440.01.31.06JS**Manufacturing Date: 31JAN2006**

QC testing was performed by Colorado State University under the Leprosy Research Support Contract (NIH). The Colorado State University documentation for lot rp.Rv0440.01.31.06JS is attached.

ATCC[®], on behalf of BEI Resources, hereby represents and warrants that the material provided under this certificate has been subjected by the contractor to the tests and procedures specified and that the results described, along with any other data provided in this certificate, are true and accurate to the best of ATCC[®]'s knowledge.

ATCC[®] is a trademark of the American Type Culture Collection.

You are authorized to use this product for research use only. It is not intended for human use.



TB Contract Antibody QC Sheet

General Information: Rabbit polyclonal antiserum to recombinant *M. tb* protein Rv0440, GroEL2, 65 kDa heat shock protein (ML0317 homologue in *M. leprae*)

Product: rabbit polyclonal antiserum against Rv0440; 4° 8d bleed
 Lot Number: rp.Rv0440.01.31.06JS
 Species: *Mycobacterium leprae*
 Strain: N/A Type: rabbit polyclonal serum

Production Information:

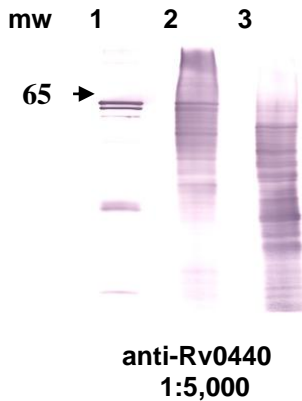
Cell Line: N/A Notebook/pp: John Spencer, Animal Notebook, 2001-2007, pp 127-129
 Amount of serum harvested: 72 mL Clarity: clear

QC Information: Western blot towards recombinant *M. tb* Rv0440 (GroEL2), native *M. tb* cell wall protein and MLMA (membrane) proteins.

Notebook/pp: John Spencer, Animal Notebook, 2001-2007, pp 127-129
 Titer: >1:5,000 Western blot: >1:5,000

Special Instructions: 250 µL, lyophilized; reconstitute with sterile distilled water; store frozen

QC Western blot: lane 1, 5 ng recombinant Rv0440; lane 2, 1.25 µg *M. tb* native cell wall protein; lane 3, 1.25 µg *M. leprae* native MLCwA protein.



Aliquot Information: _____ 250 µL, lyophilized _____

John Spencer

John Spencer

Produced 1/31/06

Lab Supervisor / Date 6/23/10