

Listeria monocytogenes, Strain FSL F6900

Catalog No. NR-13227

Product Description: *Listeria monocytogenes* (*L. monocytogenes*), strain F6900 was isolated in 1989 from a single case of human listeriosis linked to the consumption of processed meat in the United States.

Lot¹: 58666838

Manufacturing Date: 19JUN2009

TEST	SPECIFICATIONS	RESULTS
Phenotypic Analysis Cellular morphology Colony morphology ² Growth at 4°C ³ Motility at 26°C Motility at 37°C Biochemical characterization: Analytical profile index (API [®] Listeria) β-hemolysis ⁴ Catalase activity	Report results Report results Growth Positive Positive Consistent with <i>L. monocytogenes</i> Positive Positive	Gram-positive rod Circular, entire, smooth, and white (Figure 1) Growth Positive Positive Consistent with <i>L. monocytogenes</i> Positive Positive
Genotypic Analysis Sequencing of 16S ribosomal RNA gene (~ 1410 bp) RiboPrinter Microbial Characterization System	Consistent with <i>L. monocytogenes</i> Consistent with <i>L. monocytogenes</i>	Consistent with <i>L. monocytogenes</i> ⁵ Consistent with <i>L. monocytogenes</i>
Viability (post-freeze)²	Growth	Growth

¹NR-13227 was produced by inoculation of the deposited material into Brain Heart Infusion broth and grown 24 hours at 37°C and aerobic atmosphere. Broth inoculum was added to Kolles (Tryptic Soy Agar with 5% defibrinated sheep blood) which were grown 24 hours at 37°C and aerobic atmosphere to produce this lot.

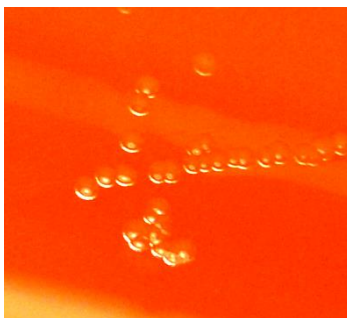
²24 hours at 37°C and aerobic atmosphere on Tryptic Soy Agar with 5% defibrinated sheep blood

³7 days in an aerobic atmosphere on Tryptic Soy Agar with 5% defibrinated sheep blood

⁴Hemolytic activity on blood agar is generally used to distinguish *L. monocytogenes* from other *Listeria* species

⁵Also consistent with other *Listeria* species

Figure 1



Date: 10 MAY 2012

Signature: 

Title: Technical Manager, BEI Authentication or designee

ATCC[®], on behalf of BEI Resources, hereby represents and warrants that the material provided under this certificate has been subjected to the tests and procedures specified and that the results described, along with any other data provided in this certificate, are true and accurate to the best of ATCC[®]'s knowledge.

ATCC[®] is a trademark of the American Type Culture Collection.

You are authorized to use this product for research use only. It is not intended for human use.

