

Salmonella enterica subsp. enterica, Strain LS1026

Catalog No. NR-4342

Product Description: *Salmonella enterica* (*S. enterica*) subsp. *enterica*, strain LS1026 is a derivative of strain 14028. Strain 14028 (also referred to as CDC 6516-60) was isolated from chickens and deposited to the ATCC® in 1960. Strain LS1026 features a deleted STM3117 gene (Δ STM3117), a putative glutathione-dependent glyoxalase which may have a role in neutralizing methylglyoxal, a compound lethal to *Salmonella*.

Lot¹: 59586817

Manufacturing Date: 12NOV2010

TEST	SPECIFICATIONS	RESULTS
Phenotypic Analysis Cellular morphology Colony morphology ² Analytical profile index (API® 20 E) ³	Gram-negative rod Report results Consistent with <i>Salmonella</i> spp.	Gram-negative rod Circular, convex, entire, and translucent (Figure 1) Consistent with <i>Salmonella</i> spp
Genotypic Analysis Sequencing of 16S ribosomal RNA gene (~ 520 bp) RiboPrinter® Microbial Characterization System	Consistent with <i>S. enterica</i> Consistent with <i>S. enterica</i> subsp. <i>enterica</i> serovar Typhimurium	Consistent with <i>S. enterica</i> Consistent with <i>S. enterica</i> subsp. <i>enterica</i> serovar Typhimurium
Serogrouping	Report results	Serogroup B ⁴
Viability (post-freeze)²	Growth	Growth

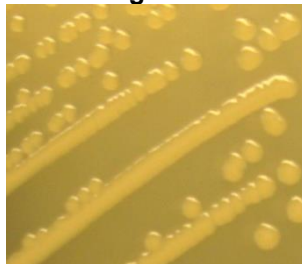
¹NR-4342 was produced by inoculation of the deposited material into Tryptic Soy Broth and grown 24 hours in an aerobic atmosphere. Broth inoculum was added to Kolles which was grown 24 hours at 37°C and aerobic atmosphere to produce this lot.

²24 hours at 37°C and aerobic atmosphere on Tryptic Soy Agar

³Additional serological tests are required to determine *Salmonella* species using API® 20 E

⁴Serogroup B contains serotype Typhimurium in addition to other serotypes

Figure 1



Date: 13 SEP 2011

Signature:

Title:

Technical Manager, BEI Authentication or designee

ATCC®, on behalf of BEI Resources, hereby represents and warrants that the material provided under this certificate has been subjected to the tests and procedures specified and that the results described, along with any other data provided in this certificate, are true and accurate to the best of ATCC®'s knowledge.

ATCC® is a trademark of the American Type Culture Collection.

You are authorized to use this product for research use only. It is not intended for human use.



BEI Resources

www.beiresources.org

E-mail: contact@beiresources.org

Tel: 800-359-7370

Fax: 703-365-2898