

**Monoclonal Anti-Botulinum Neurotoxin Subtype A1 Light Chain, Clone L9B12.2 (produced *in vitro*)**

**Catalog No. NR-20812**

This reagent is the property of the U.S. Government.

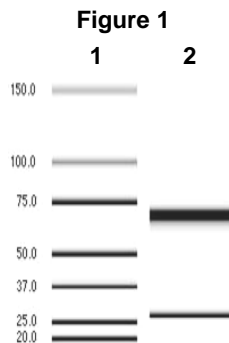
**Product Description:** Mouse monoclonal antibody prepared against the light chain of subtype A1 neurotoxin of *Clostridium botulinum* was purified from clone L9B12.2 hybridoma supernatant by protein G affinity chromatography.

**Lot: 59663612**

**Manufacturing Date: 29MAR2011**

TEST	SPECIFICATIONS	RESULTS
Antibody Class Determination	Report results	IgG1κ
Experion Pro260 Analysis	Correct molecular weight (MW) for heavy and light chains Report results	Correct MW for heavy and light chains (Figure 1) 93.4% pure
Concentration by Spectrophotometer at OD <sub>280</sub>	Report results	1.9 mg/mL
Functional Activity by Western Blotting <sup>1</sup>	Report results	Reactive with BoNT/A light chain
Sterility	0.22 μm filter-sterilized	0.22 μm filter-sterilized

<sup>1</sup>Using 0.65 μg of Botulinum neurotoxin type A (BEI Resources NR-4529) and a 1:1,000 dilution of NR-20812 followed by a 1:10,000 dilution of IRDye 680LT-conjugated goat anti-mouse IgG (H + L) secondary antibody (LiCor 926-68020).



Lane 1: MW Markers (kDa)  
Lane 2: NR-20812

**Date:** 04 JAN 2012

**Signature:**

*Dorothy C. Young*

**Title:**

Technical Manager, BEI Authentication or designee

ATCC®, on behalf of BEI Resources, hereby represents and warrants that the material provided under this certificate has been subjected to the tests and procedures specified and that the results described, along with any other data provided in this certificate, are true and accurate to the best of ATCC's knowledge.

ATCC® is a trademark of the American Type Culture Collection.

You are authorized to use this product for research use only. It is not intended for human use.

