

**Salmonella enterica subsp. enterica, Strain LS1052**

**Catalog No. NR-4345**

**Product Description:** *Salmonella enterica* (*S. enterica*) subsp. *enterica*, strain LS1052 is a derivative of strain 14028 that expresses STM2777, tagged with 3 X FLAG epitopes. STM2777 is a TonB-dependent siderophore receptor protein, IronN.

**Lot<sup>1</sup>: 59703592**

**Manufacturing Date: 10MAR2011**

TEST	SPECIFICATIONS	RESULTS
<b>Phenotypic Analysis</b> Cellular morphology Colony morphology <sup>2</sup>  Analytical profile index (API <sup>®</sup> 20 E) <sup>3</sup>	Gram-negative rod Report results  Consistent with <i>Salmonella</i> spp.	Gram-negative rod Circular, convex, entire, translucent and cream-colored (Figure 1) Consistent with <i>Salmonella</i> spp.
<b>Genotypic Analysis</b> Sequencing of 16S ribosomal RNA gene (~ 1400 base pairs)	Consistent with <i>S. enterica</i>	Consistent with <i>S. enterica</i>
<b>Serogrouping</b>	Report results	Serogroup B <sup>4</sup>
<b>Viability (post-freeze)<sup>2</sup></b>	Growth	Growth

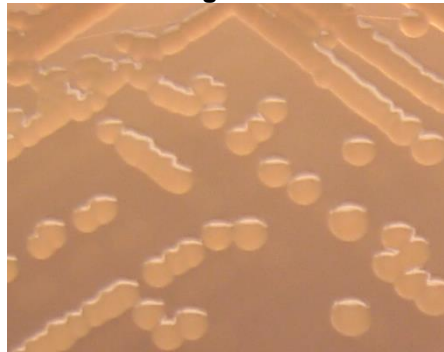
<sup>1</sup>NR-4345 was produced by inoculation of the deposited material into Tryptic Soy Broth and grown 24 hours in an aerobic atmosphere. Broth inoculum was added to Kolles which was grown 24 hours at 37°C and aerobic atmosphere to produce this lot.

<sup>2</sup>24 hours at 37°C and aerobic atmosphere on Tryptic Soy Agar

<sup>3</sup>Additional serological tests are required to determine *Salmonella* species using API<sup>®</sup> 20 E

<sup>4</sup>Serogroup B contains serotype Typhimurium in addition to other serotypes

**Figure 1**



**Date:** 26 JUL 2011

**Signature:** 

**Title:** Technical Manager, BEI Authentication or designee

ATCC<sup>®</sup>, on behalf of BEI Resources, hereby represents and warrants that the material provided under this certificate has been subjected to the tests and procedures specified and that the results described, along with any other data provided in this certificate, are true and accurate to the best of ATCC<sup>®</sup>'s knowledge.

ATCC<sup>®</sup> is a trademark of the American Type Culture Collection.

You are authorized to use this product for research use only. It is not intended for human use.

