

**Monoclonal Anti-*Mycobacterium tuberculosis* Mpt32 (Gene Rv1860), Clone CS-93  
(produced *in vitro*)**

**Catalog No. NR-13817**

This reagent is the tangible property of the U.S. Government.

**Product Description:**

Antibody Designation: CS-93

Monoclonal antibody to *Mycobacterium tuberculosis*, strain H37Rv Mpt32 [(also referred to as Apa (Alanine and proline rich secreted protein) and 45 kDa protein)] was produced in cell culture using a B cell hybridoma generated by the fusion of myeloma cells with immunized mouse splenocytes.

**Lot: 59501341**

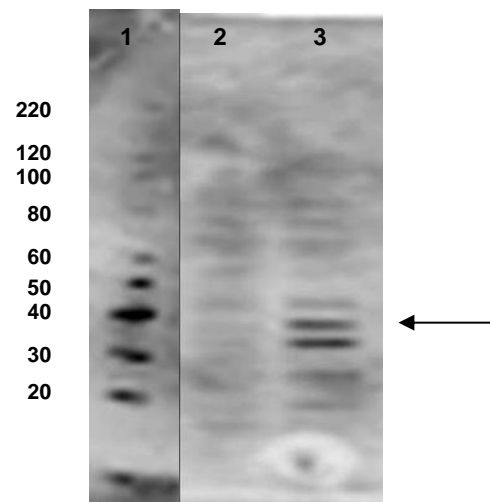
**Manufacturing Date: 15OCT2010**

TEST	SPECIFICATIONS	RESULTS
<b>Antibody Class</b>	Report results	IgG <sub>1</sub> κ
<b>Functional Activity</b> Western Blot using NR-13817 (see Figure 1) <sup>1</sup> Cytosol fraction (NR-14834) Culture filtrate protein fraction (NR-14825)	Not reactive Reactive	Not reactive Reactive
<b>Sterility</b>	0.22 μm filter sterilized	0.22 μm filter sterilized

<sup>1</sup>NR-13817 can be used neat or at dilutions up to 1:10.

**Figure 1: Functional Activity of NR-13817 by Western Blot Analysis**

- Lane 1: Magic Mark™ XP Western Protein Standard (Invitrogen™ Cat No. LC5602)
- Lane 2: Cytosol fraction (NR-14834) probed with NR-13817
- Lane 3: Culture filtrate protein fraction (NR-14825) probed with NR-13817



## Certificate of Analysis for NR-13817

**Date:** 30 APR 2014

**Signature:** 

**Title:** Technical Manager, BEI Authentication or designee

ATCC<sup>®</sup>, on behalf of BEI Resources, hereby represents and warrants that the material provided under this certificate has been subjected to the tests and procedures specified and that the results described, along with any other data provided in this certificate, are true and accurate to the best of ATCC<sup>®</sup>'s knowledge.

ATCC<sup>®</sup> is a trademark of the American Type Culture Collection.

You are authorized to use this product for research use only. It is not intended for human use.

