

Genomic DNA from *Staphylococcus epidermidis*, Strain BCM0060

Catalog No. HM-140D

Product Description: Genomic DNA was obtained from a preparation of *Staphylococcus epidermidis* (*S. epidermidis*), strain BCM0060.

Lot^{1,2}: 59650533

Manufacturing Date: 24MAR2011

| TEST | SPECIFICATIONS | RESULTS |
|---|--|--|
| Sequencing of 16S Ribosomal RNA Gene (~ 1420 base pairs) | ≥ 99% identical to depositor's sequence Consistent with <i>S. epidermidis</i> | Pending Consistent with <i>S. epidermidis</i> |
| Agarose Gel Electrophoresis | High molecular weight chromosomal DNA | High molecular weight chromosomal DNA (Figure 1) |
| Concentration by PicoGreen® Measurement | 0.7 to 1.5 µg in 25 to 100 µL per vial | 1.1 µg in 34 µL per vial (34 µg/mL) |
| Functional Activity by PCR Amplification 16S ribosomal RNA gene | ~ 1500 bp amplicon | ~ 1500 bp amplicon |
| OD₂₆₀/OD₂₈₀ Ratio | 1.7 to 2.0 | 1.9 |
| Bacterial Inactivation 10% of total yield plated on Tryptic Soy Agar ^{3,4} | No viable bacteria detected | No viable bacteria detected |

¹Quality control of HMP organisms used for DNA extraction is only performed to demonstrate that the material produced by BEI Resources is identical to the deposited material. It should not be considered a complete characterization of the deposited organism.

²The bacterial preparation used for extraction of genomic DNA was produced by Tryptic Soy Broth culture of BEI Resources HM-140 (lot 58954312). After incubation for 24 hours at 37°C in an aerobic atmosphere, genomic DNA was extracted using proprietary technology.

³7 days at 37°C in an aerobic atmosphere

⁴An extraction procedure was used that has been shown to consistently inactivate 100% of Gram-positive and Gram-negative bacteria.

Date: 23 JUN 2011

Signature:



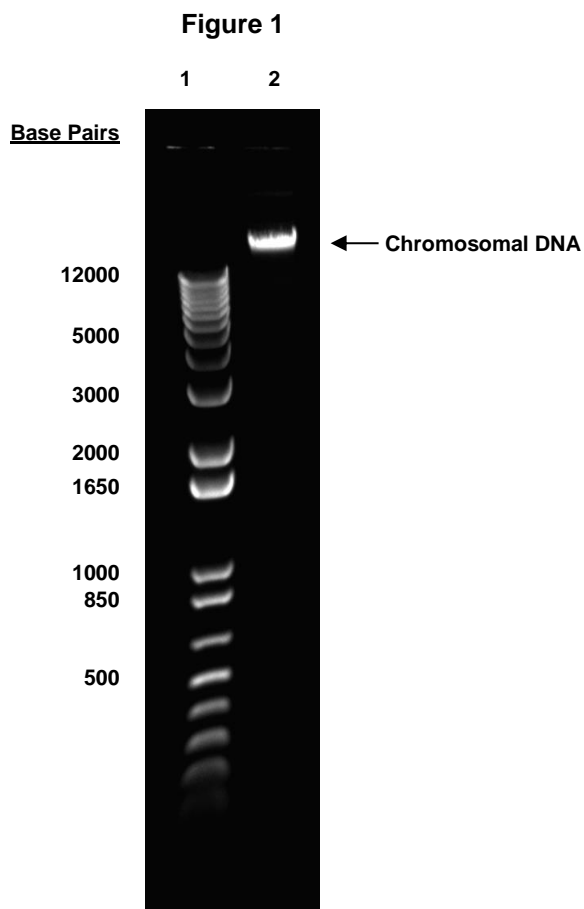
Title: Technical Manager, BEI Authentication or designee

ATCC®, on behalf of BEI Resources, hereby represents and warrants that the material provided under this certificate has been subjected by ATCC® to the tests and procedures specified and that the results described, along with any other data provided in this certificate, are true and accurate to the best of ATCC®'s knowledge.

ATCC® is a trademark of the American Type Culture Collection.

You are authorized to use this product for research use only. It is not intended for human use.





Lane 1: Invitrogen™ TrackIt 1 Kb Plus DNA Ladder™
Lane 2: 200 ng of HM-140D