

Genomic DNA from *Salmonella enterica* subsp. *enterica*, Strain 15/5

Catalog No. NR-15236

Product Description: Genomic DNA was obtained from a preparation of *Salmonella enterica* (*S. enterica*) subsp. *enterica*, strain 15/5, serovar Abortusovis.

Lot¹: 58772862

Manufacturing Date: 21SEP2009

TEST	SPECIFICATIONS	RESULTS
Sequencing of 16S Ribosomal RNA Gene (~ 1470 bp)	Consistent with <i>S. enterica</i>	Consistent with <i>S. enterica</i> ²
Agarose Gel Electrophoresis	High molecular weight chromosomal DNA	High molecular weight chromosomal DNA (Figure 1)
Concentration by PicoGreen [®] Measurement	4 to 6 µg in 25 to 100 µL per vial	6.6 µg in 40 µL per vial (165 µg/mL) ³
Functional Activity by PCR Amplification 16S ribosomal RNA gene	~ 1500 bp amplicon	~ 1500 bp amplicon
OD ₂₆₀ /OD ₂₈₀ Ratio	1.7 to 1.9	1.9
Bacterial Inactivation 10% of total yield plated on Tryptic Soy Agar ^{4,5}	No viable bacteria detected	No viable bacteria detected

¹*S. enterica* subsp. *enterica*, strain 15/5 was deposited by Professor Michael McClelland of the Sidney Kimmel Cancer Center, San Diego, California. The bacterial preparation used for extraction of genomic DNA was produced by Tryptic Soy Broth culture of the deposited material. After incubation for 24 hours at 37°C and aerobic atmosphere, genomic DNA was extracted using proprietary technology.

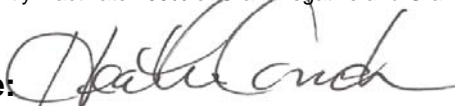
²Also consistent with other *Salmonella* species

³The µg of DNA in the vials is greater than required by current specifications

⁴7 days at 37°C in an aerobic atmosphere

⁵An extraction procedure was used that has been shown to consistently inactivate 100% of Gram-negative and Gram-positive bacteria.

Date: 11 FEB 2011

Signature: 

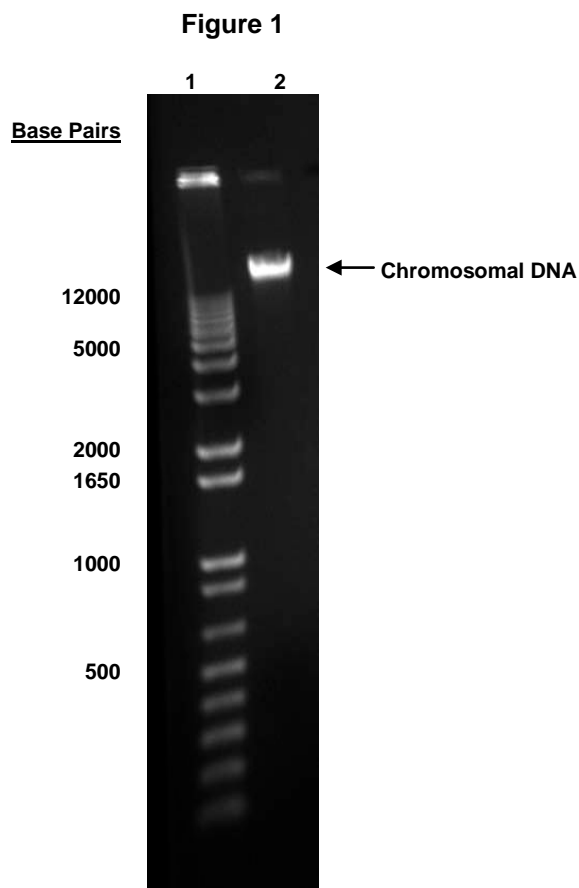
Title: Technical Manager, BEI Authentication or designee

ATCC[®], on behalf of BEI Resources, hereby represents and warrants that the material provided under this certificate has been subjected to the tests and procedures specified and that the results described, along with any other data provided in this certificate, are true and accurate to the best of ATCC[®]'s knowledge.

ATCC[®] is a trademark of the American Type Culture Collection.

You are authorized to use this product for research use only. It is not intended for human use.





Lane 1: Invitrogen™ TrackIt 1 Kb Plus DNA Ladder™
Lane 2: 200 ng of NR-15236