

**Genomic DNA from *Klebsiella pneumoniae*, Isolate 8**

**Catalog No. NR-15471**

**Product Description:** Genomic DNA was obtained from a preparation of *Klebsiella pneumoniae* (*K. pneumoniae*), isolate 8.

**Lot<sup>1</sup>: 58855101**

**Manufacturing Date: 10DEC2009**

TEST	SPECIFICATIONS	RESULTS
<b>Sequencing of 16S Ribosomal RNA Gene</b> (~ 1410 bp)	Consistent with <i>K. pneumoniae</i>	Consistent with <i>K. pneumoniae</i>
<b>Agarose Gel Electrophoresis</b>	High molecular weight chromosomal DNA	High molecular weight chromosomal DNA (Figure 1)
<b>Concentration by PicoGreen<sup>®</sup> Measurement</b>	4 to 6 µg in 25 to 100 µL per vial	4.7 µg in 42 µL per vial (112 µg/mL)
<b>Functional Activity by PCR Amplification</b> 16S ribosomal RNA gene Presence of β-lactamase ( <i>bla<sub>KPC</sub></i> ) gene <sup>2</sup>	~ 1500 bp amplicon ~ 1000 bp amplicon	~ 1500 bp amplicon ~ 1000 bp amplicon
<b>OD<sub>260</sub>/OD<sub>280</sub> Ratio</b>	1.7 to 1.9	1.8
<b>Bacterial Inactivation</b> 10% of total yield plated on Tryptic Soy Agar <sup>3,4</sup>	No viable bacteria detected	No viable bacteria detected

<sup>1</sup>The bacterial preparation used for extraction of genomic DNA was produced by Tryptic Soy Broth culture of the deposited material. After incubation for 24 hours at 37°C and aerobic atmosphere, genomic DNA was extracted using proprietary technology.

<sup>2</sup>Yigit, H. et al. "Novel Carbapenem-Hydrolyzing β-Lactamase, KPC-1, from a Carbapenem-Resistant Strain of *Klebsiella pneumoniae*." *Antimicrob. Agents Chemother.* 45 (2001): 1151-1161. PubMed: 11257029.

<sup>3</sup>7 days at 37°C in an aerobic atmosphere.

<sup>4</sup>An extraction procedure was used that has been shown to consistently inactivate 100% of Gram-negative bacteria.

**Date:** 11 FEB 2011

**Signature:**



**Title:**

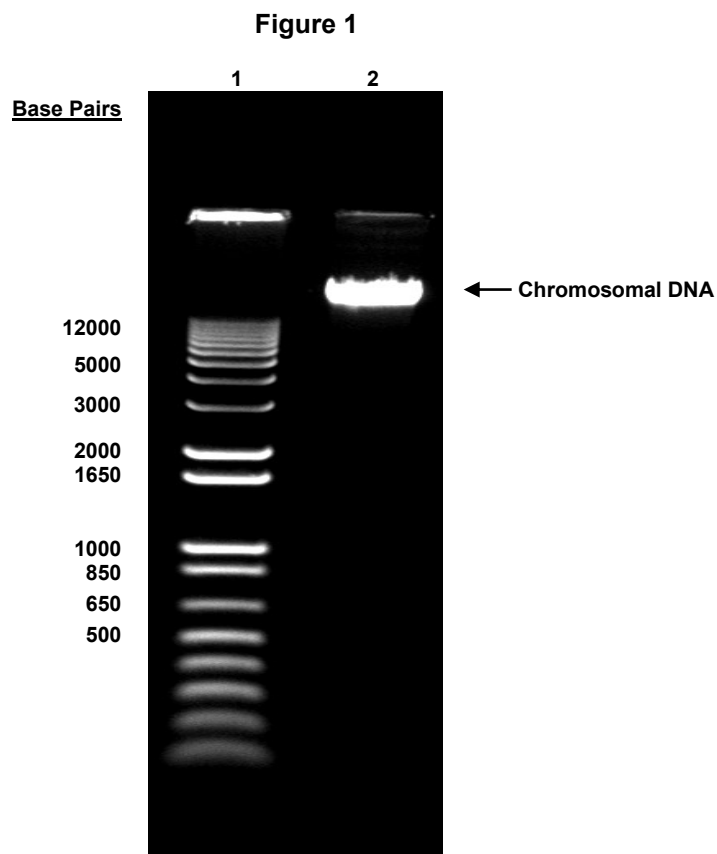
Technical Manager, BEI Authentication or designee

ATCC<sup>®</sup>, on behalf of BEI Resources, hereby represents and warrants that the material provided under this certificate has been subjected to the tests and procedures specified and that the results described, along with any other data provided in this certificate, are true and accurate to the best of ATCC<sup>®</sup>'s knowledge.

ATCC<sup>®</sup> is a trademark of the American Type Culture Collection.

You are authorized to use this product for research use only. It is not intended for human use.





Lane 1: Invitrogen™ TrackIt 1 Kb Plus DNA Ladder™  
Lane 2: 200 ng of NR-15471