

Plasmid pMRLB.49 Containing Gene Rv1738 from *Mycobacterium tuberculosis*

Catalog No. NR-13300

This reagent is the tangible property of the U.S. Government.

Product Description: NR-13300 is a recombinant expression vector containing *Mycobacterium tuberculosis* gene Rv1738. Gene Rv1738 was amplified by PCR and cloned into pET23b for expression in *Escherichia coli*.

Lot: 05.EC.01.20

Manufacturing Date: 20JAN2005

TEST	SPECIFICATIONS	RESULTS
Agarose Gel Electrophoresis (see attached QC Gel)¹ Linearization with <i>NdeI</i> Linearization with <i>XhoI</i> Linearization with <i>Clal</i> Digestion with <i>NdeI</i> and <i>XhoI</i>	~ 3.954 kb ~ 3.954 kb ~ 3.954 kb ~ 0.294 kb (insert); ~ 3.66 kb (vector)	Pending ~ 3.954 kb Pending Pending; ~ 3.66 kb (vector)
Concentration by OD₂₆₀	Report results	0.08 µg/µL
Absorbance Ratio (OD₂₆₀/OD₂₈₀)	Report results	1.8

¹Performed by Colorado State University under the TB Vaccine Testing and Research Materials Contract (NIH)

Date: 31 AUGUST 2009

Signature: Signature on File

Title: Technical Manager, BEI Authentication or designee

ATCC[®], on behalf of BEI Resources, hereby represents and warrants that the material provided under this certificate has been subjected by the contractor to the tests and procedures specified and that the results described, along with any other data provided in this certificate, are true and accurate to the best of ATCC[®]'s knowledge.

ATCC[®] is a trademark of the American Type Culture Collection.

You are authorized to use this product for research use only. It is not intended for human use.



QC gel

Restriction enzymes used in QC analysis:

NdeI & XhoI (cloning), ClaI (insert diagnostic – 1 site in 1738)

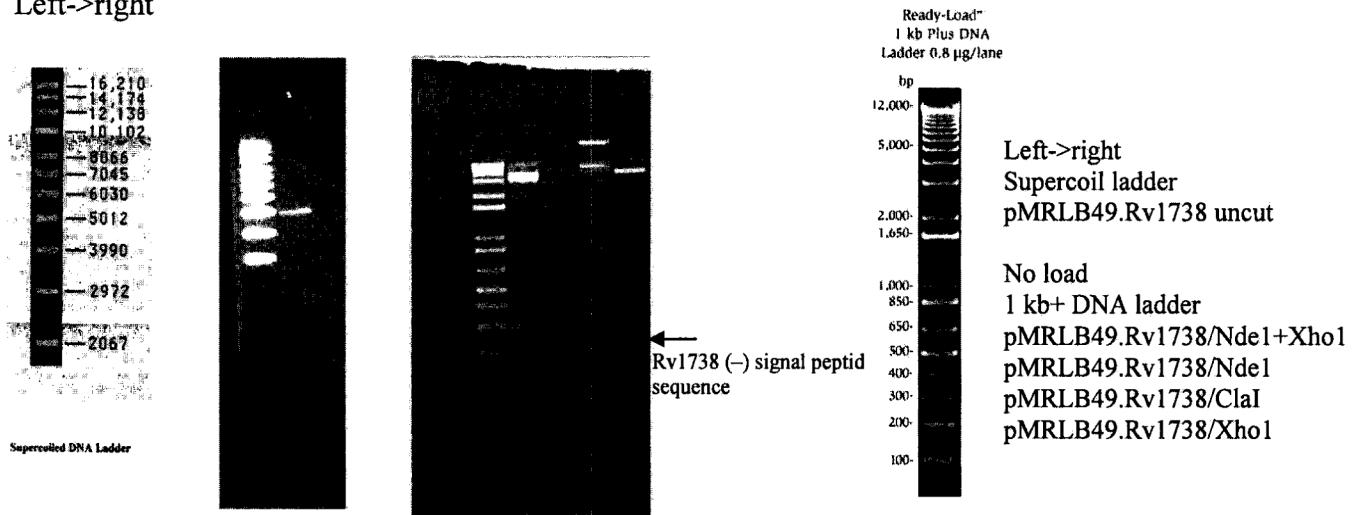
Expected size of restriction fragments

Vector	<u>3.66 kb pET23b + NdeI +XhoI</u>
Insert	<u>0.294 kb Rv1738 + NdeI +XhoI</u>
Other	<u>3.954 kb linearized plasmid – NdeI, XhoI, ClaI single digests</u>

Gel description (file number, % agarose, buffer) lmwRec1#13pp65 and lmwRec1#14pp66
2.0 % agarose/1XTAE

Molecular weight markers Invitrogen 1KB Plus, Invitrogen Supercoiled DNA Ladder

Left->right



Generated by Leah M. Wolf Date 3/16/05
Supervisor John T. Bell Date 3/28/05

Form 4.2.03.JB