

Plasmid pMRLB.24 Containing Gene Rv0577 from *Mycobacterium tuberculosis*

Catalog No. NR-13288

This reagent is the tangible property of the U.S. Government.

Product Description: NR-13288 is a recombinant expression vector containing *Mycobacterium tuberculosis* gene Rv0577, which encodes a conserved hypothetical protein, TB27.3. Gene Rv0577 was amplified by PCR and cloned into pET23b for expression in *Escherichia coli*.

Lot: 04.EC.10.18

Manufacturing Date: 18OCT2004

TEST	SPECIFICATIONS	RESULTS
Agarose Gel Electrophoresis (see attached QC Gel)¹ Linearization with <i>NdeI</i> Linearization with <i>HindIII</i> Linearization with <i>NcoI</i> Digestion with <i>NdeI</i> and <i>HindIII</i>	~ 4.39 kb ~ 4.39 kb ~ 4.39 kb ~ 0.785 kb (insert); ~ 3.66 kb (vector)	~ 4.39 kb ~ 4.39 kb ~ 4.39 kb ~ 0.785 kb; ~ 3.66 kb
Concentration by OD₂₆₀	Report results	0.1 µg/µL
Absorbance Ratio (OD₂₆₀/OD₂₈₀)	Report results	1.9

¹Performed by Colorado State University under the TB Vaccine Testing and Research Materials Contract (NIH)

Date: 31 AUGUST 2009

Signature: Signature on File

Title: Technical Manager, BEI Authentication or designee

ATCC®, on behalf of BEI Resources, hereby represents and warrants that the material provided under this certificate has been subjected by the contractor to the tests and procedures specified and that the results described, along with any other data provided in this certificate, are true and accurate to the best of ATCC®'s knowledge.

ATCC® is a trademark of the American Type Culture Collection.

You are authorized to use this product for research use only. It is not intended for human use.



QC gel

Restriction enzymes used in QC analysis

NdeI & HindIII (cloning), NcoI (insert diagnostic – 1 site in 0577)

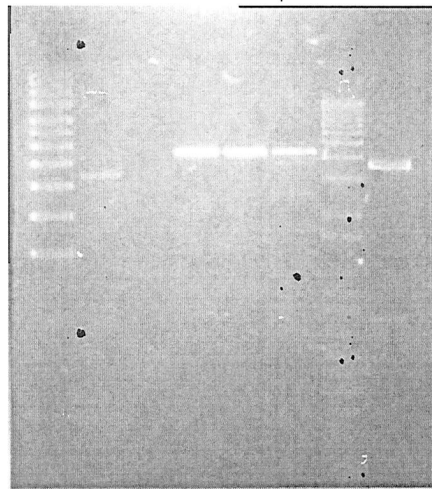
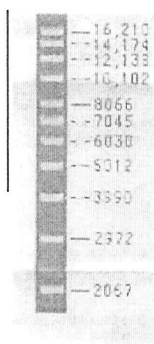
Expected size of restriction fragments

- Vector 3.66 kb pET23b + NdeI + HindIII
- Insert 0.785 Rv0577 + NdeI + HindIII includes signal sequence. *du*
- Other 4.39 kb linearized plasmid –NdeI, HindIII, NcoI single digests

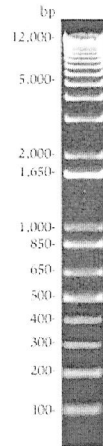
Gel description (file number, % agarose, buffer) lmwRec1#6 pp43, 1%, 1X TAE

Molecular weight markers Invitrogen 1KB Plus, Invitrogen Supercoiled DNA Ladder

Left->right



Ready-Load™
1 kb Plus DNA
Ladder 0.8 µg/lan



Left->right
Supercoil ladder
pMRLB.24.uncut
No load
pMRLB24/NdeI
pMRLB.24/HindIII
pMRLB.24/NcoI
1Kb+ ladder
pMRLB.24 /NdeI+HindIII

Rensel

Generated by

Trish J. Thompson

Date 07/31/09

Supervisor

Ray W.L.

Date 07/31/2009