

Genomic DNA from *Bacillus anthracis*, Strain Sterne Δ GBAA0599-2

Catalog No. NR-10307

This reagent is the tangible property of the U.S. Government.

Product Description: Genomic DNA was isolated from a preparation of *Bacillus anthracis* (*B. anthracis*), strain Sterne Δ GBAA0599-2, a deletion mutant of the toxigenic acapsulate original Sterne strain (34F2).

Lot¹: 58253182

Manufacturing Date: 13MAR2009

TEST	SPECIFICATIONS	RESULTS
Sequencing of 16S Ribosomal RNA Gene (~ 1470 base pairs)	Identical to BEI Resources NR-10003 Consistent with <i>B. cereus</i> group	Identical to BEI Resources NR-10003 Consistent with <i>B. cereus</i> group ²
Presence or Absence of Plasmids Confirmed by PCR Amplification pXO1 (<i>aat</i>) pXO2 (<i>at</i> , <i>capA</i> , <i>capB</i> , <i>capC</i>)	Positive Negative	Positive Negative
Agarose Gel Electrophoresis	High molecular weight chromosomal DNA	High molecular weight chromosomal DNA (Figure 1)
Content by PicoGreen[®] Measurement	4 to 6 μ g in 25 to 100 μ L per vial	6.0 μ g in 29 μ L per vial (210 μ g/mL)
Functional Activity by PCR Amplification 16S ribosomal RNA gene Virulence markers on plasmid pXO1 (<i>aat</i>)	~ 1500 bp amplicon ~ 125 bp amplicon	~ 1500 bp amplicon ~ 125 bp amplicon
OD₂₆₀/OD₂₈₀ Ratio	1.7 to 1.9	1.8
Bacterial Inactivation 10% of total yield plated on Tryptic Soy Agar with 5% sheep blood ^{3,4}	No viable bacteria detected	No viable bacteria detected

¹NR-10307 was produced by broth (Tryptic Soy Broth; BD 211768) culture of the NR-10003 (Lot: 58441524). After incubation for 24 hours at 37°C and aerobic atmosphere, genomic DNA was extracted using proprietary technology.

²*Bacillus cereus* group species (*B. cereus*, *B. thuringiensis*, *B. mycooides*, and *B. anthracis*) cannot be classified based on 16S sequence [Spencer, R. C. "*Bacillus anthracis*." *J. Clin. Pathol.* 56 (2003): 182-187. PubMed: 12610093].

³7 days at 37°C in an aerobic atmosphere

⁴An extraction procedure was used that has been shown to consistently inactivate 100% of Gram-negative bacteria.

Date: 23 JUL 2009

Signature: Signature on File

Title: Technical Manager, BEI Authentication or designee

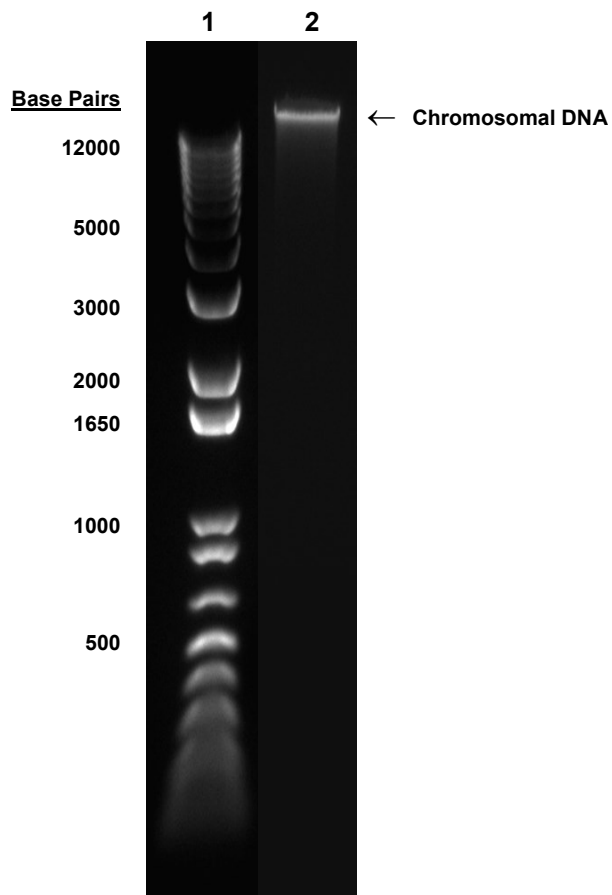
ATCC[®], on behalf of BEI Resources, hereby represents and warrants that the material provided under this certificate has been subjected to the tests and procedures specified and that the results described, along with any other data provided in this certificate, are true and accurate to the best of ATCC[®]'s knowledge.

ATCC[®] is a trademark of the American Type Culture Collection.

You are authorized to use this product for research use only. It is not intended for human use.



Figure 1



Lane 1: Invitrogen™ TrackIt™ 1 Kb Plus DNA Ladder
Lane 2: 200 ng of NR-10307