

**Influenza A Virus H2 Primers**

**Catalog No. NR-12074**

This reagent is the tangible property of the U.S. Government.

**Product Description:** NR-12074 is designed to detect the presence of the hemagglutinin (HA) gene from influenza A virus subtype 2 (H2) using a reverse transcription polymerase chain reaction, resulting in an amplicon of approximately 650 base pairs.

**Lot: 58401892**

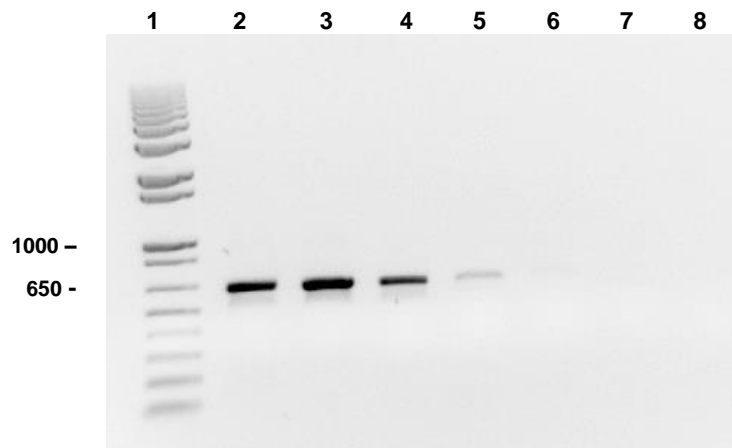
**Manufacturing Date: 23SEP2008**

| TEST   | SPECIFICATIONS                     | RESULTS                   |
|--|------------------------------------|---------------------------|
| <b>PCR Amplification and Sequencing<sup>1,2</sup></b><br>Amplicon size<br>NCBI blast of sequence | Expected size<br>Expected sequence | ~ 650 bp (Figure 1)<br>H2 |
| <b>Specificity</b>   | Specific for H2                    | Specific for H2           |
| <b>Concentration of Each Primer</b>  | Report results                     | 25 µM                     |

<sup>1</sup>Viral genomic RNA from influenza A virus, A/duck/Germany/1215/73 (H2N3) was extracted using a Qiagen QIAamp® Viral RNA Mini kit.

<sup>2</sup>The primers are described in Lee, M. S., et al. "Identification and Subtyping of Avian Influenza Viruses by Reverse Transcription-PCR." *J. Virol. Methods* 97 (2001): 13-22. PubMed: 11483213.

**Figure 1: RT-PCR Amplification of Serially Diluted Genomic RNA from Influenza A Virus, A/duck/Germany/1215/73 (H2N3)**



Lane 1: Invitrogen™ 1 Kb Plus DNA Ladder™  
 Lane 2: 5000 ng  
 Lane 3: 500 ng  
 Lane 4: 50 ng  
 Lane 5: 5 ng  
 Lane 6: 0.5 ng  
 Lane 7: 0.05 ng  
 Lane 8: No RNA

Note: The viral genomic RNA is in a background of cellular and carrier RNA.

**Date:** 29 JAN 2009

**Signature:** Signature on File

**Title:** Technical Manager, BEI Authentication or designee

ATCC<sup>®</sup>, on behalf of BEI Resources, hereby represents and warrants that the material provided under this certificate has been subjected to the tests and procedures specified and that the results described, along with any other data provided in this certificate, are true and accurate to the best of ATCC<sup>®</sup>'s knowledge.

ATCC<sup>®</sup> is a trademark of the American Type Culture Collection.  
You are authorized to use this product for research use only. It is not intended for human use.

