

Candida albicans, Strain 23Q

Catalog No. NR-29341

Product Description:

Candida albicans (*C. albicans*), strain 23Q was isolated from a human in China. NR-29341 was produced by inoculation of BEI Resources seed lot 61662625 onto Yeast Mold agar and grown for 4 days at 25°C in an aerobic atmosphere. The agar growth was harvested with 20% glycerol to produce this lot.

Lot: 70050021

Manufacturing Date: 08FEB2022

TEST	SPECIFICATIONS	RESULTS
Phenotypic Analysis Cellular morphology 3 days at 25°C in an aerobic atmosphere on Yeast Mold agar Colony morphology VITEK® 2 (YST card) VITEK® MS (MALDI-TOF)	Report results Report results <i>C. albicans</i> (≥ 89%) <i>C. albicans</i>	Globose/subglobose to ovoid, in singles and clusters; no pseudohyphae observed (Figure 1) Butyrous and off-white (Figure 2) <i>C. albicans</i> (99%) <i>C. albicans</i> (99.9%)
Genotypic Analysis Sequencing of partial 18S ribosomal RNA (rRNA) gene, internal transcribed spacer (ITS) 1, 5.8S rRNA gene, ITS 2, partial 26S rRNA (~ 500 base pairs) Sequencing of 28S rRNA gene (~ 590 base pairs)	≥ 99% sequence identity to <i>C. albicans</i> type strain (GenBank: CP017630.1) ≥ 99% sequence identity to <i>C. albicans</i> type strain (GenBank: CP017630.1)	99.6% sequence identity to <i>C. albicans</i> type strain (GenBank: CP017630.1) ¹ 99.8% sequence identity to <i>C. albicans</i> type strain (GenBank: CP017630.1) ¹
Purity 3 days at 25°C in an aerobic atmosphere in Nutrient broth with 0.1% Yeast Extract 3 days at 37°C in an aerobic atmosphere in Nutrient broth with 0.1% Yeast Extract	No bacterial growth No bacterial growth	No bacterial growth No bacterial growth
Viability (post-freeze) 3 days at 25°C in an aerobic atmosphere on Yeast Mold agar	Growth	Growth

¹Also consistent with other *Candida* species

Figure 1: Cellular Morphology

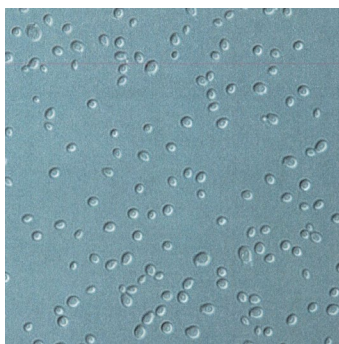
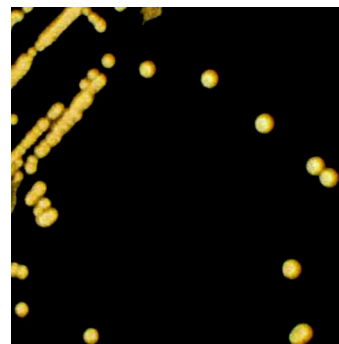


Figure 2: Colony Morphology



/Sonia Bjorum Brower/

Sonia Bjorum Brower

21 AUG 2023

Technical Manager or designee, ATCC Federal Solutions

ATCC®, on behalf of BEI Resources, hereby represents and warrants that the material provided under this certificate has been subjected to the tests and procedures specified and that the results described, along with any other data provided in this certificate, are true and accurate to the best of ATCC®'s knowledge.

ATCC® is a trademark of the American Type Culture Collection.

You are authorized to use this product for research use only. It is not intended for human use.

