

Shiga Toxin Type 2 Subunit B, Recombinant from *Escherichia coli*

Catalog No. NR-4677

This reagent is the tangible property of the U.S. government.

Product Description: NR-4677 is a recombinant form of the B subunit of Shiga toxin type 2 (Stx2). The amino acid sequence includes a C-terminal hexa-histidine tag and amino acid residues 20 to 89 of the Stx2 subunit B protein (GenPept: AAD25446). The recombinant protein was expressed in *Escherichia coli* and purified by nickel affinity chromatography.

Lot: 57680189

Manufacturing Date: 01NOV2007

TEST	SPECIFICATIONS	RESULTS
Appearance	Clear and colorless, no particulate matter	Clear and colorless, no particulate matter
SDS-PAGE (SYPRO Orange densitometer scan)	Dominant band of expected size (8.6 kDa) ~ 95% pure	Dominant band of ~ 8 kDa ~ 93% pure (Figure 1) ¹
Mass Spectrometry	Measured mass within 5% of expected mass based on amino acid sequence: 8,640 daltons	Measured mass within 0.1% of expected mass based on amino acid sequence: 8,640 daltons
SELDI-TOF Mass Spectrometry of Lys-C Digest	> 50% of total residues accounted for in peptides of expected mass	79% of total residues accounted for in peptides of expected mass
Concentration by Bicinchoninic Acid Protein Assay	Report results	1.02 mg/mL
Functional Activity by Western Blot Analysis Rabbit polyclonal antibody to Stx2 subunit B (BEI Resources NR-9352) Carbonic anhydrase	Reactive Non-reactive	Reactive (Figure 2) Non-reactive
Cytotoxicity in Vero Cells NR-4677 Stx2 recombinant holotoxin	Report results Report results	Non-cytotoxic at 1×10^{-7} M $CD_{50} \sim 1 \times 10^{-10}$ M
Sterility	0.22 μ m filter sterilized	0.22 μ m filter sterilized
Endotoxin Content (Limulus Amoebocyte Lysate assay)	Report results	1,250 EU/mg ²
Absorbance Ratio (OD₂₈₀/OD₂₆₀)	Report results	1.53

¹Bands of higher molecular weight may be multimers.

²NR-4677 is unsuitable for injection into animals.

Figure 1

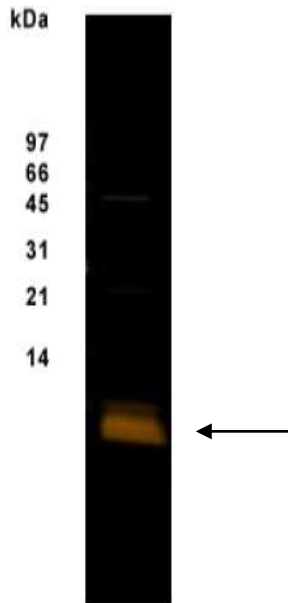
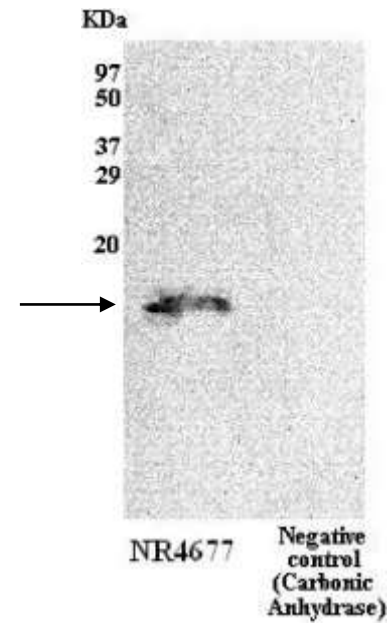


Figure 2



Date: 04 FEB 2008

Signature: Signature on File

Title: Technical Manager, BEI Authentication or designee

ATCC®, on behalf of BEI Resources, hereby represents and warrants that the material provided under this certificate has been subjected by the contractor to the tests and procedures specified and that the results described, along with any other data provided in this certificate, are true and accurate to the best of ATCC®'s knowledge.

ATCC® is a trademark of the American Type Culture Collection.

You are authorized to use this product for research use only. It is not intended for human use.

