

***Klebsiella pneumoniae*, Strain 160_1080**

Catalog No. NR-44349

This reagent is the tangible property of the U.S. Government.

Product Description: *Klebsiella pneumoniae* (*K. pneumoniae*), strain 160_1080 was isolated in March 2012 from the blood of a patient with sepsis in Cleveland, Ohio, USA.

Lot¹: 64184813

Manufacturing Date: 13APR2016

TEST	SPECIFICATIONS	RESULTS
Phenotypic Analysis Cellular morphology Colony morphology ² Motility (wet mount) VITEK [®] MS (MALDI-TOF)	Gram-negative rods Report results Report results <i>K. pneumoniae</i>	Gram-negative rods Circular, convex, entire, smooth and gray (Figure 1) Non-motile <i>K. pneumoniae</i> (99.9%)
Genotypic Analysis Sequencing of 16S ribosomal RNA gene (~ 1480 base pairs)	≥ 99% sequence identity to <i>K. pneumoniae</i> , strain 160_1080 (GenBank: ARSN01000125.1)	99.6% sequence identity to <i>K. pneumoniae</i> , strain 160_1080 (GenBank: ARSN01000125.1) ³
Purity (post-freeze)⁴	Growth consistent with expected colony morphology	Growth consistent with expected colony morphology
Viability (post-freeze)²	Growth	Growth

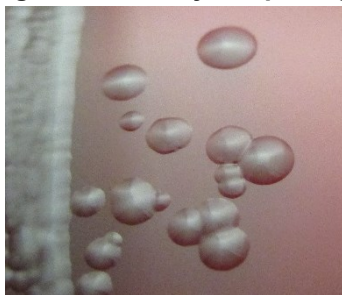
¹NR-44349 was produced by inoculation of the deposited material into Tryptic Soy broth and incubated for 1 day at 37°C in an aerobic atmosphere. Broth inoculum was added to Tryptic Soy agar with 5% defibrinated sheep blood kolles, which were grown for 1 day at 37°C in an aerobic atmosphere to produce this lot.

²1 day at 37°C in an aerobic atmosphere on Tryptic Soy agar with 5% defibrinated sheep blood

³Also consistent with other *Klebsiella* species

⁴Purity of this lot was assessed for 7 days at 37°C in an aerobic atmosphere on Tryptic Soy agar with 5% defibrinated sheep blood.

Figure 1: Colony Morphology



Date: 17 MAY 2016

Signature: 

BEI Resources Authentication

ATCC[®], on behalf of BEI Resources, hereby represents and warrants that the material provided under this certificate has been subjected to the tests and procedures specified and that the results described, along with any other data provided in this certificate, are true and accurate to the best of ATCC[®]'s knowledge.

ATCC[®] is a trademark of the American Type Culture Collection.

You are authorized to use this product for research use only. It is not intended for human use.

