

Polyclonal Anti-*Mycobacterium leprae* MLMA-LAM (antiserum, Rabbit)**Catalog No. NR-19358**

This reagent is the tangible property of the U.S. Government.

Product Description:

Antibody Designation: anti-MLMA-LAM

Polyclonal antiserum to membrane protein minus lipoarabinomannan (MLMA-LAM) of *Mycobacterium leprae* was produced in rabbits. The LAM was removed from the membrane protein fraction by TX-114 extraction. The antiserum is reported to be active in ELISA and Western Blot assays.

Lot: 62325997**Manufacturing Date: 16MAY2014**

Production and QC testing were performed by Colorado State University (CSU). The CSU documentation for lot 14.Anti-MLMA(-)LAM.3.31.rp is attached.

ATCC[®], on behalf of BEI Resources, hereby represents and warrants that the material provided under this certificate has been subjected by the contractor to the tests and procedures specified and that the results described, along with any other data provided in this certificate, are true and accurate to the best of ATCC[®]'s knowledge.

ATCC[®] is a trademark of the American Type Culture Collection.

You are authorized to use this product for research use only. It is not intended for human use.



TB Contract Antibody QC Sheet

General Information:

Product: anti-MLMA(-)LAM
Lot Number: 14.Anti-MLMA(-)LAM.3.31.rp
Species: *Mycobacterium leprae*
Type: Rabbit Sera

Production Information:

Cell Line: _____ SOP#: _____ Notebook/pp: _____
Amount of CS Harvested: _____ Clarity: clear
IgG Purification: _____ SOP#: _____ Notebook/pp: _____, _____

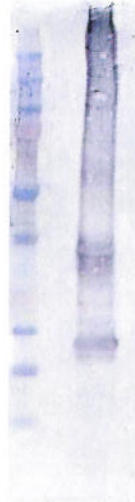
QC Information:

Filtered with 0.2 μ m PES filter
Tested Against: MLMA(-)LAM SOP#: AB102
Notebook/pp: Keri Wright, Antibody Notebook #3 Y3/Y4 pAb, pgs , 56-71
Titer: 1:10,000 Western blot: X ELISA: _____

Special Instructions:

QC Western blot:

1. Protein Standard
2. 5 ug MLMA(-)LAM



Aliquot Information: 100 x 0.25 ml, 31 x 0.25 ml and 6 x 10 ml bulk aliquots
*Aliquot information reflects aliquots made at the time of QC. Bulk aliquots will be broken down as needed.

Keri Wright 5/16/14
Research Associate / Date

[Signature] 5/16/14
Lab Supervisor / Date