

**Cryptococcus neoformans, Isolate 7**

**Catalog No. NR-41297**

**Product Description:** *Cryptococcus neoformans* (*C. neoformans*), isolate 7 was obtained from human cerebrospinal fluid in China in February 2012.

**Lot<sup>1</sup>: 61680512**

**Manufacturing Date: 25APR2013**

TEST	SPECIFICATIONS	RESULTS
<b>Phenotypic Analysis</b> Cellular morphology <sup>2</sup>  Colony morphology <sup>2</sup>  VITEK <sup>®</sup> 2 Systems Version: 05.01 (YST card)	Report results  Report results  Consistent with <i>C. neoformans</i>	Globose to ovoid, occur singly (Figure 1A) Entire, smooth, mucoid and white (Figure 1B) Consistent with <i>C. neoformans</i>
<b>Genotypic Analysis</b> Sequencing of partial 18S ribosomal RNA (rRNA) gene, internal transcribed spacer (ITS) 1, 5.8S rRNA gene, ITS 2, partial 28S rRNA (~ 520 base pairs) Sequencing of 26S rRNA gene (~ 620 base pairs)	Consistent with <i>C. neoformans</i>  Consistent with <i>C. neoformans</i>	Consistent with <i>C. neoformans</i> <sup>3,4</sup>  Consistent with <i>C. neoformans</i> <sup>3,4</sup>
<b>Purity<sup>5</sup></b> Nutrient broth with 0.1% Yeast Extract at 25°C Nutrient broth with 0.1% Yeast Extract at 37°C	No bacterial growth No bacterial growth	No bacterial growth No bacterial growth
<b>Viability (post-freeze)<sup>2</sup></b>	Growth	Growth

<sup>1</sup>NR-41297 was produced by growth of the deposited material on Yeast Mold agar in an aerobic atmosphere at 25°C. An inoculum from the plate was added to Yeast Mold broth and grown 3 days at 25°C in an aerobic atmosphere to produce this lot.

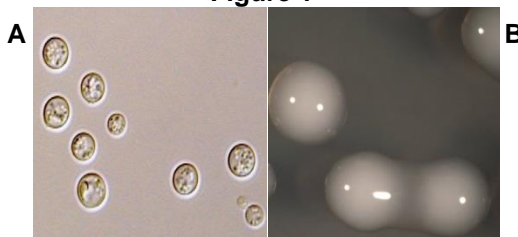
<sup>2</sup>4 days at 25°C in an aerobic atmosphere on Yeast Mold agar

<sup>3</sup>Also consistent with *C. gattii*

<sup>4</sup>Sequence matches with >99% similarity to *C. neoformans* type strain CBS 132 (also referred to as CCRC 20528, DBVPG 6010, IFO 0608, NRRL Y-2534 and ATCC<sup>®</sup> 32045™)

<sup>5</sup>Clarity of broth was determined by visual inspection after 3 days at 25°C and 37°C in an aerobic atmosphere.

**Figure 1**



**Date:** 31 JUL 2014

**Signature:**

**Title:** Technical Manager, BEI Authentication or designee

ATCC<sup>®</sup>, on behalf of BEI Resources, hereby represents and warrants that the material provided under this certificate has been subjected to the tests and procedures specified and that the results described, along with any other data provided in this certificate, are true and accurate to the best of ATCC<sup>®</sup>'s knowledge.

ATCC<sup>®</sup> is a trademark of the American Type Culture Collection.

You are authorized to use this product for research use only. It is not intended for human use.

