

Mycobacterium leprae* Phenolic Glycolipid-I (PGL-I)*Catalog No. NR-19342**

This reagent is the tangible property of the U.S. Government.

Product Description: NR-19342 is a preparation of the phenolic glycolipid-1 (PGL-I) of *Mycobacterium leprae* (*M. leprae*) extracted from a pool of infected armadillo liver and spleen tissue, and not from the bacilli. The extraction method involves dissolving the crude lipid extract in petroleum ether and precipitating PGL-I and other lipids with cold acetonitrile. The PGL-I is purified from the precipitate using Waters preparative Sep-pak silica cartridges followed by preparative thin layer chromatography.

Note: PGL-I has a glassy appearance and can be difficult to observe in the glass vial.

Lot: 61602194**Manufacturing Date: 06MAR2013**

Production and QC testing were performed by Colorado State University (CSU). The CSU documentation for bulk lot 13.*Mlep*.01.31.PGL-I is attached. Each vial contains approximately 1 mg of dried *Mycobacterium leprae* Phenolic Glycolipid-I (PGL-I).

ATCC[®], on behalf of BEI Resources, hereby represents and warrants that the material provided under this certificate has been subjected by the contractor to the tests and procedures specified and that the results described, along with any other data provided in this certificate, are true and accurate to the best of ATCC[®]'s knowledge.

ATCC[®] is a trademark of the American Type Culture Collection.

You are authorized to use this product for research use only. It is not intended for human use.



QUALITY CONTROL SHEET FOR *M. leprae* NATIVE PGL-I

General Information

Product Lot Number: 13.Mlep.01.31.PGL-I
Fraction Type: M. leprae native PGL-I
Species: Mycobacterium leprae
Strain: N/A

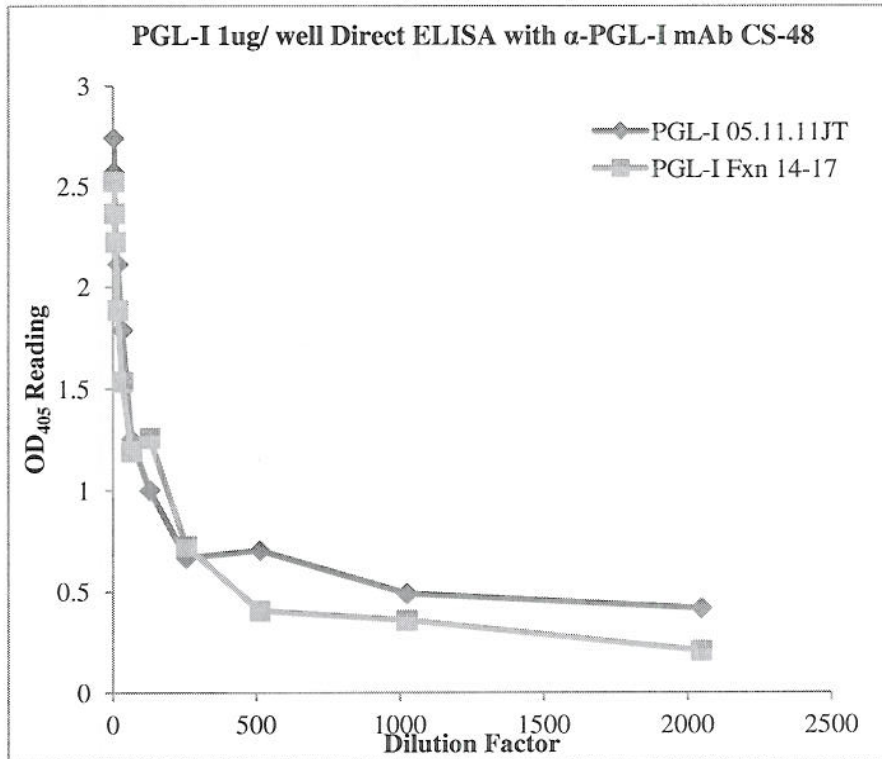
Purification Information

Starting material: 2g Crude Lipid (2:1 Chloroform: Methanol extraction of infected armadillo tissues)
Starting material Lot # Tissue homogenate extracted crude lipid JB04.27.99
Protocol used: PP052 Isolation of Native PGL-I from M.leprae
Notebook pages: Jade Kurihara Book#3 pp. 42-48.
Additional Notes: Fractions 14-17 collected and pooled together, eluted with 2% Methanol: 98% Chloroform and 3% Methanol: 97% Chloroform.

Quality Control Information

Total Volume: 5.0ml Total Amount: 50mg TLC date: 03.01.2013
TLC Solvent system: 90:5 Chloroform: Methanol
ELISA assay: 1ug/ well of purified PGL-I, Serial two-fold of mAb CS-48 culture supernatant 1:2-2048
Notebook pp: Jade Kurihara Book#3 pp. 50- 51

QC TLC & ELISA



Aliquot information: 30 vials of 1mg aliquots dried and 20mg in 1 vial will be aliquoted as needed.

Jade Kurihara 1/31/13
Produced by/ Date

[Signature]
Supervisor/ Date