

**Genomic RNA from Hepatitis A Virus, HM175/18f**

**Catalog No. NR-28909**

**Product Description:** Genomic RNA was isolated from a preparation of cell lysate and supernatant from *Macaca mulatta* kidney FRhK-4 cells<sup>1</sup> infected with hepatitis A virus, HM175/18f.

**Lot<sup>2</sup>: 59959077**

**Manufacturing Date: 01NOV2011**

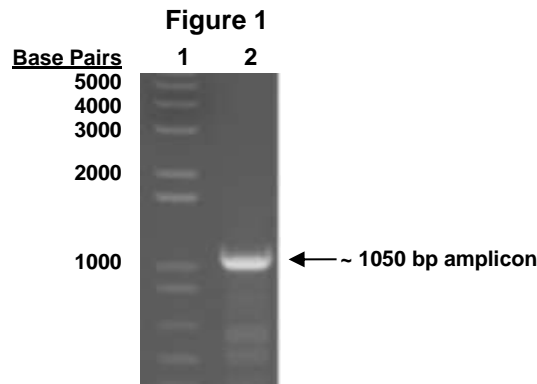
TEST	SPECIFICATIONS	RESULTS
<b>Sequencing of Hepatitis A Specific Region</b> Polyprotein gene (897 nucleotides)	Consistent with hepatitis A virus Identical to NR-137	Consistent with hepatitis A virus Identical to NR-137
<b>Functional Activity by RT-PCR Amplification<sup>3</sup></b>	~ 1050 bp amplicon	~ 1050 bp amplicon (See Figure 1)
<b>Total RNA Content by RiboGreen<sup>®</sup> Measurement (Viral, Cellular and Carrier)</b>	Report results	7.7 ng per 100 µL
<b>Virus Inactivation</b> 10% of total yield inoculated on FRhK-4 cells <sup>1</sup> and evaluated for cytopathic effect <sup>4</sup>	No virus detected	No virus detected

<sup>1</sup>FRhK-4: ATCC<sup>®</sup> CRL-1688<sup>™</sup>

<sup>2</sup>Nucleic acid was extracted from a preparation of hepatitis A virus, HM175/18f (BEI Resources NR-137; Lot 59533332), using a QIAamp<sup>®</sup> Viral RNA Mini Kit (Qiagen 52906).

<sup>3</sup>Amplified using One-Step RT-PCR Kit (Qiagen 210212) with 5µL of NR-28909 in a 50 µL reaction

<sup>4</sup>Use of the QIAamp<sup>®</sup> Viral RNA Mini Kit has been demonstrated to consistently inactivate 100% of hepatitis A virus as shown by the absence of cytopathic effect (CPE) after plating the entire extract on virus-susceptible cells.



Lane 1: Invitrogen<sup>™</sup> TrackIt<sup>™</sup> 1 Kb Plus DNA Ladder  
Lane 2: NR-28909

**Date:** 24 AUG 2012

**Signature:**

*Dorothy C. Young*

**Title:**

Technical Manager, BEI Authentication or designee

ATCC<sup>®</sup>, on behalf of BEI Resources, hereby represents and warrants that the material provided under this certificate has been subjected to the tests and procedures specified and that the results described, along with any other data provided in this certificate, are true and accurate to the best of ATCC<sup>®</sup>'s knowledge.

ATCC<sup>®</sup> is a trademark of the American Type Culture Collection.

You are authorized to use this product for research use only. It is not intended for human use.

